



i

d



l

# Língua de Sinais

INSTRUMENTOS DE AVALIAÇÃO



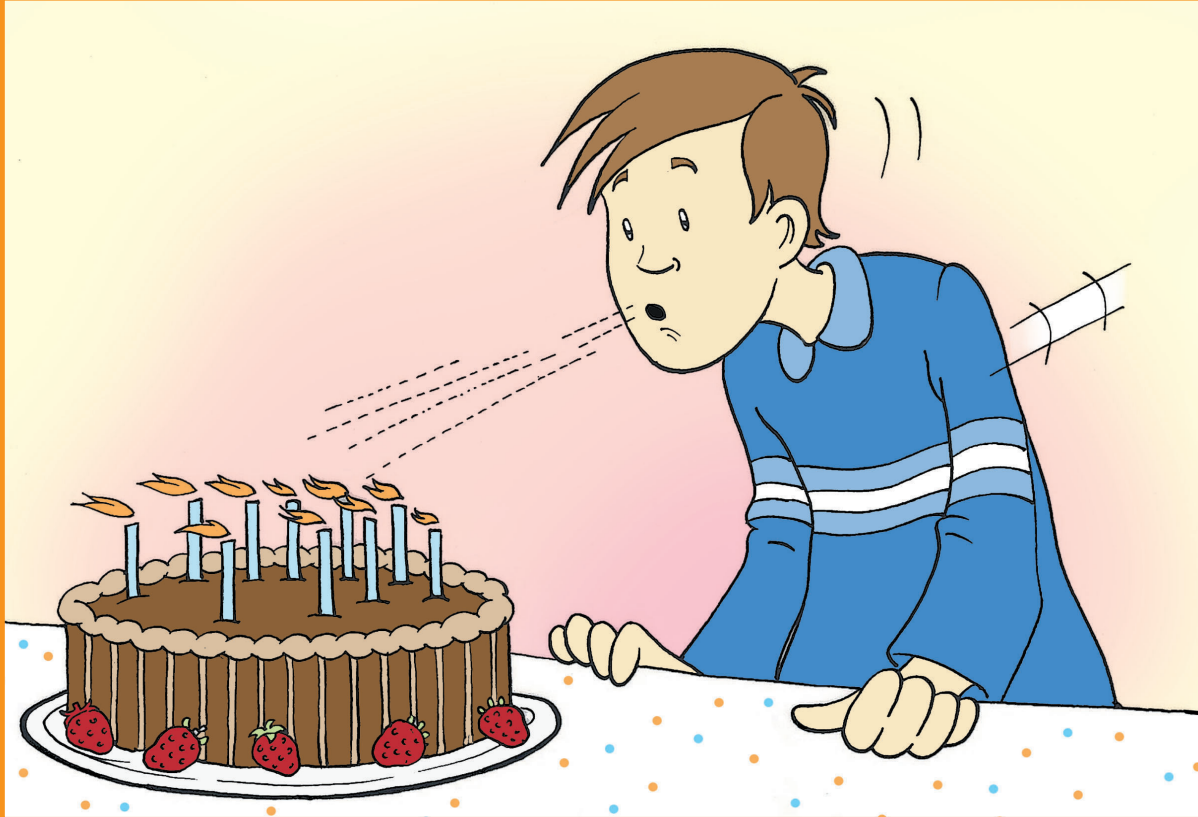
s

Ronice Müller de Quadros  
Carina Rebello Cruz



# Fichas para aplicação das tarefas de demonstração – Fase I

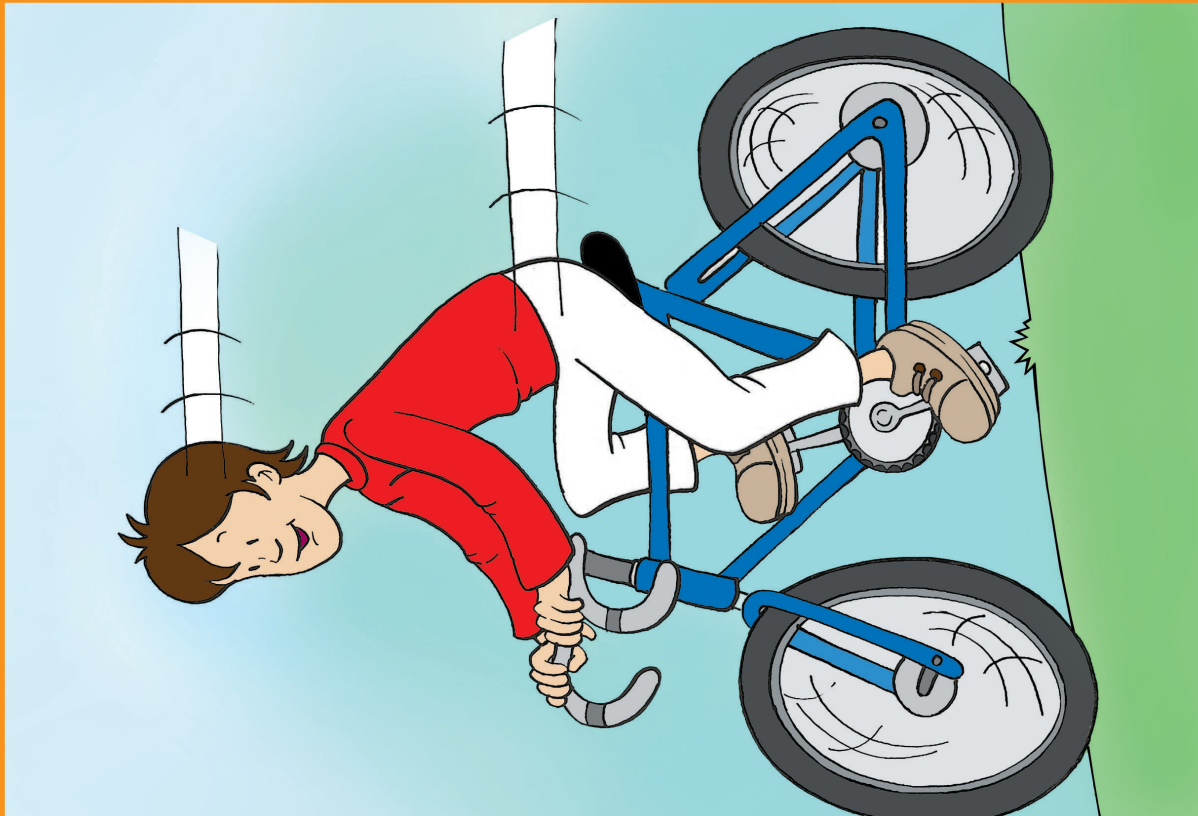
Língua de Sinais – Instrumentos de avaliação



Ronice Müller de Quadros – Carina Rebello Cruz



Língua de Sinais – Instrumentos de avaliação



Ronice Müller de Quadros – Carina Rebello Cruz

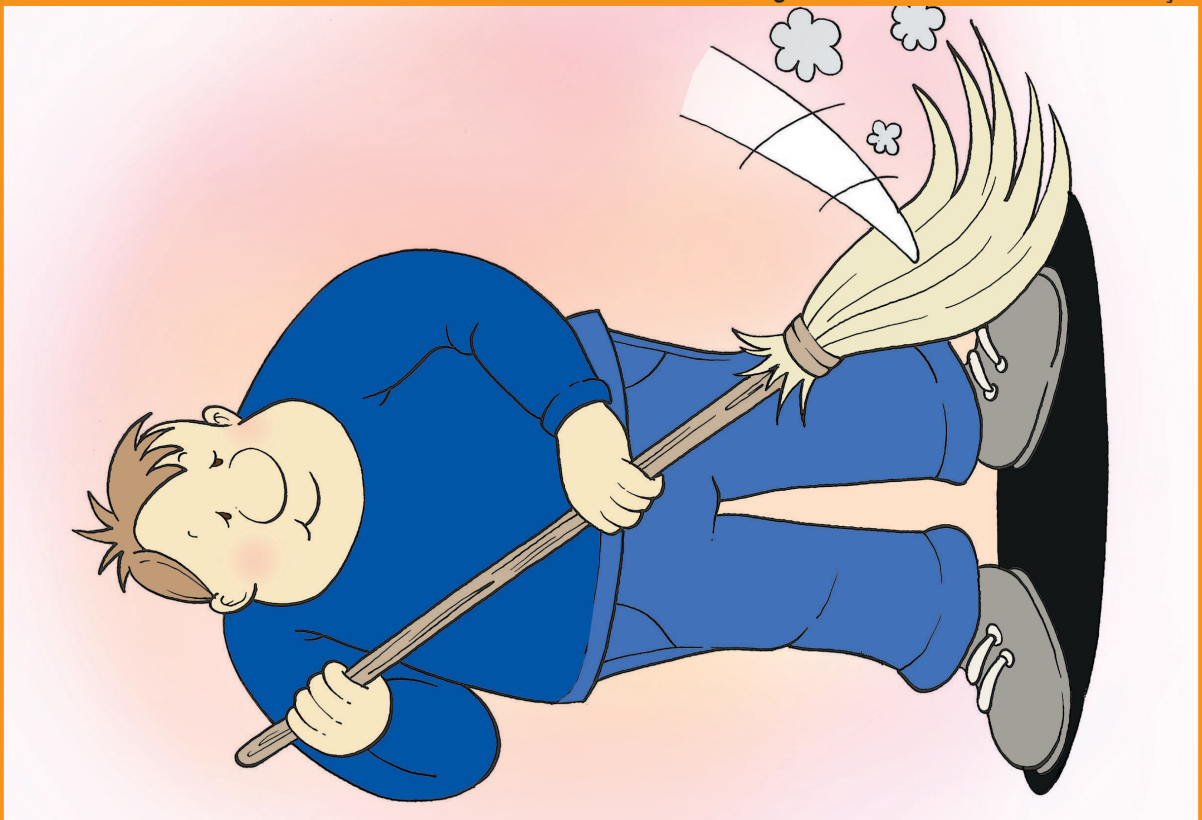
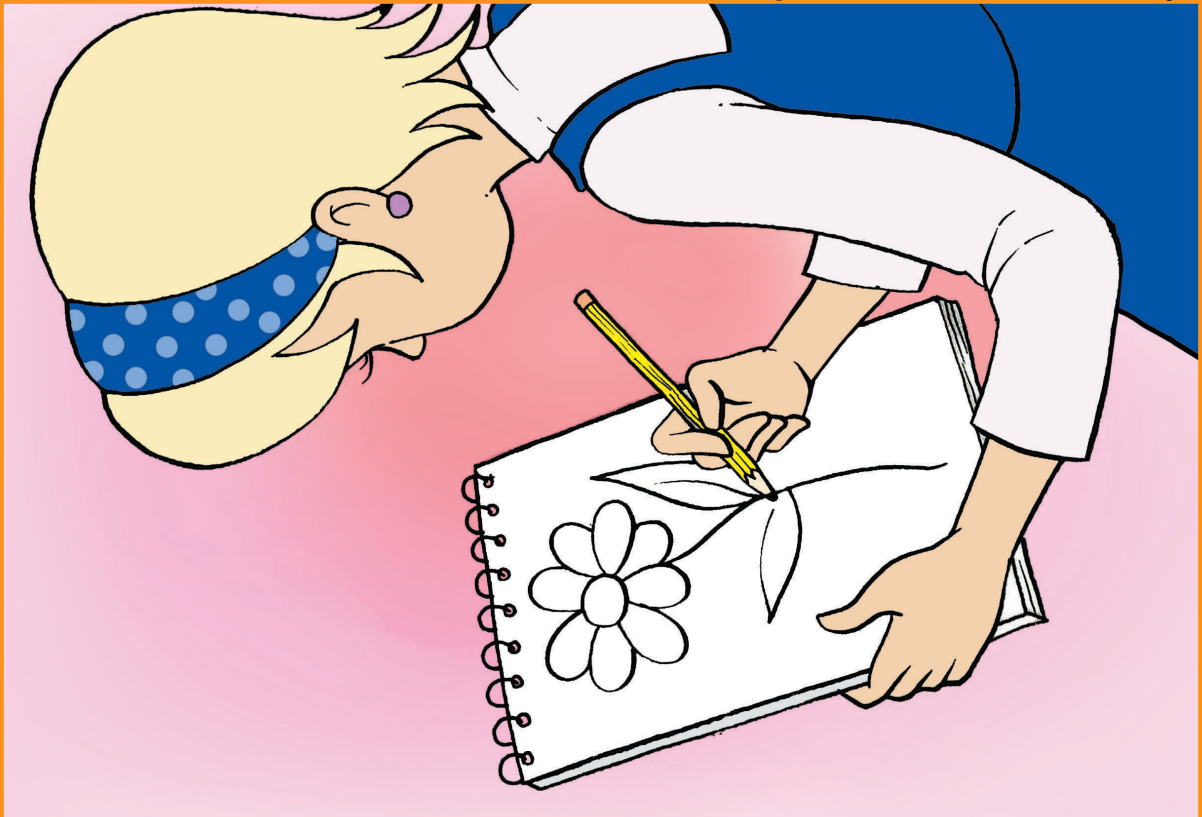


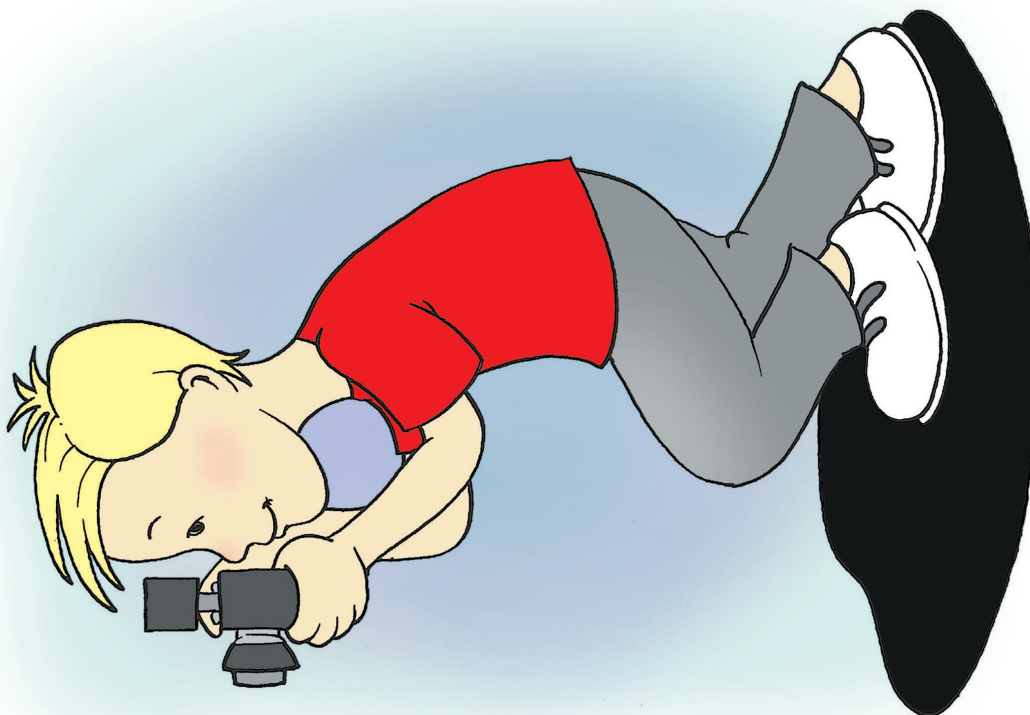


Ronice Müller de Quadros – Carina Rebello Cruz

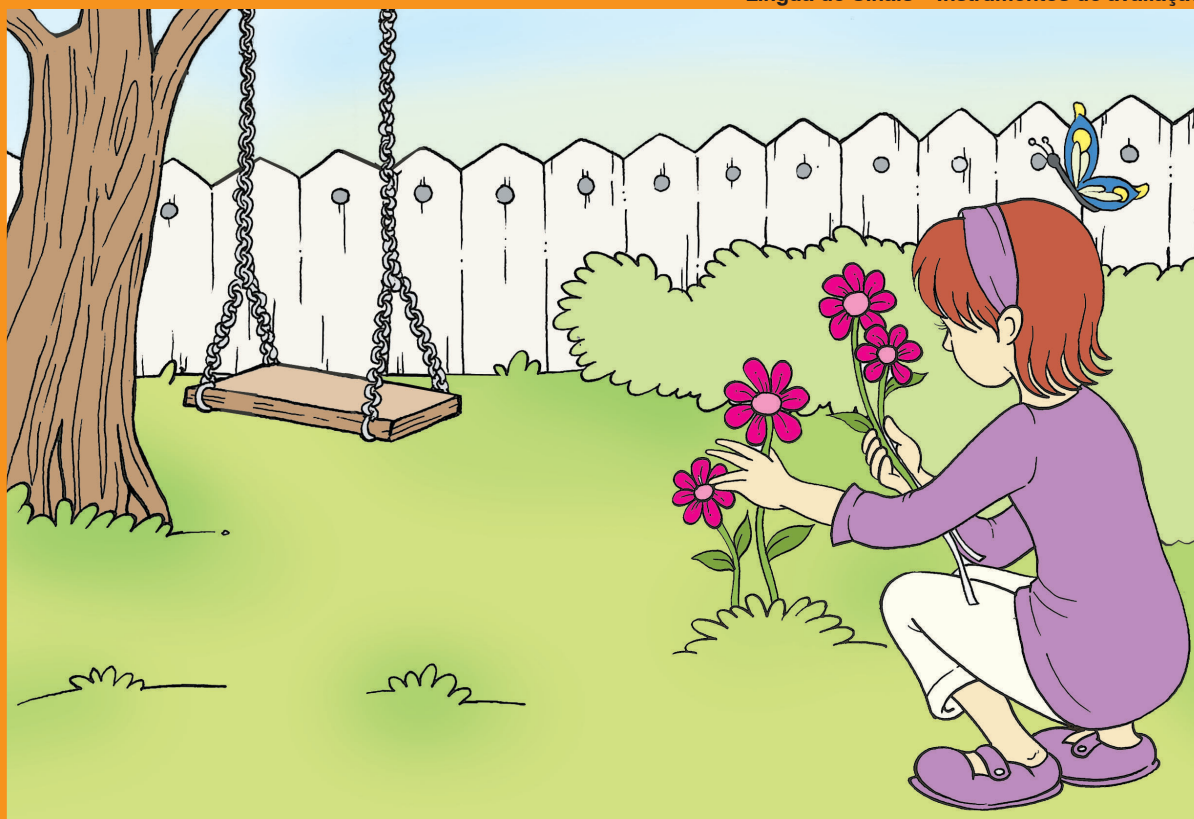


Ronice Müller de Quadros – Carina Rebello Cruz

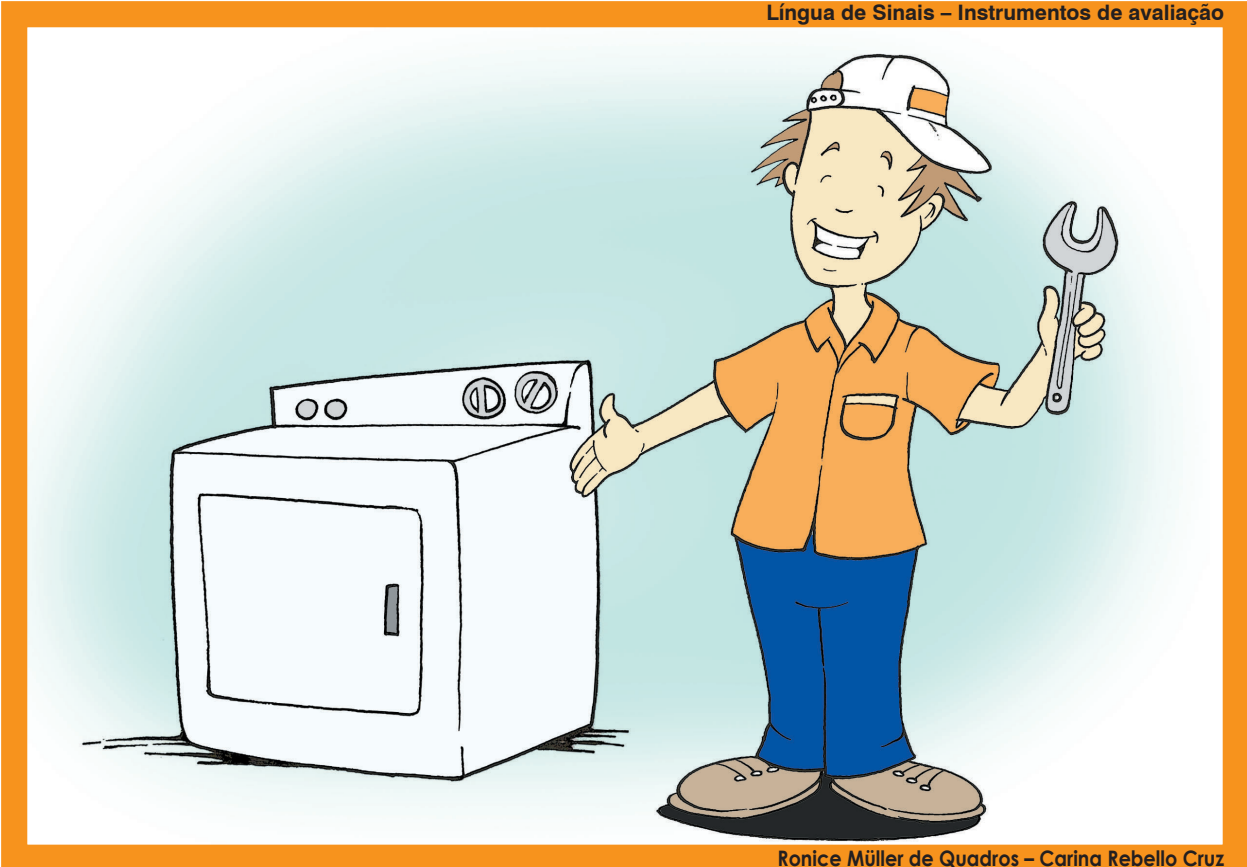




Ronice Müller de Quadros – Carina Rebello Cruz



Ronice Müller de Quadros – Carina Rebello Cruz



Ronice Müller de Quadros – Carina Rebello Cruz





## Fichas para aplicação das tarefas de demonstração – Fase II

Língua de Sinais – Instrumentos de avaliação



Ronice Müller de Quadros – Carina Rebello Cruz



Língua de Sinais – Instrumentos de avaliação

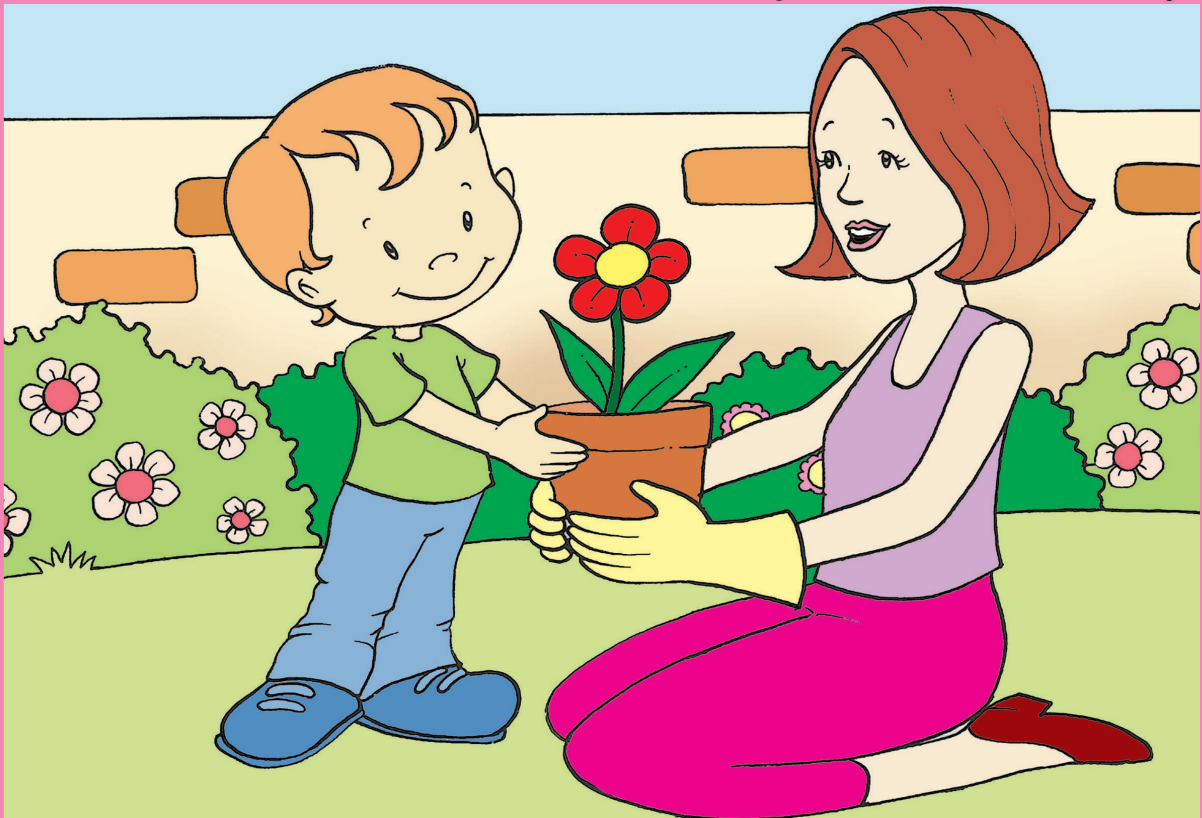


Ronice Müller de Quadros – Carina Rebello Cruz





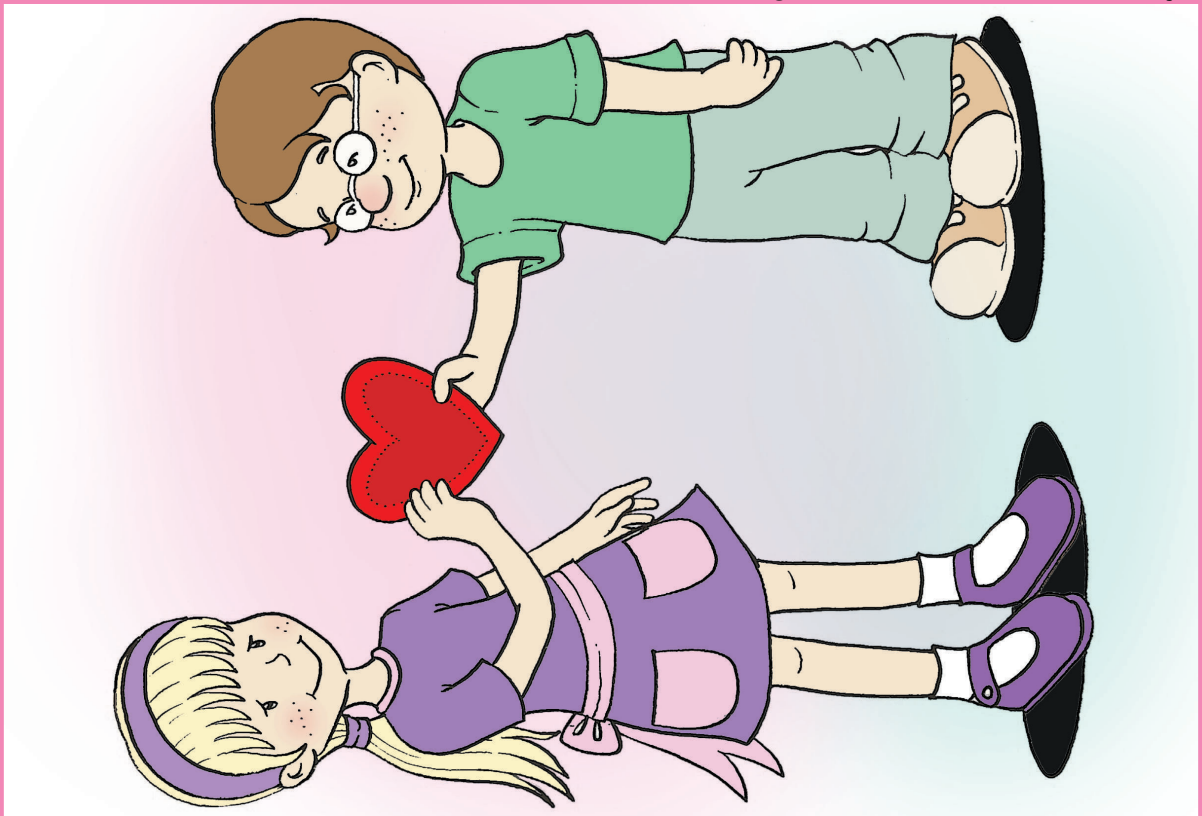
Ronice Müller de Quadros – Carina Rebello Cruz



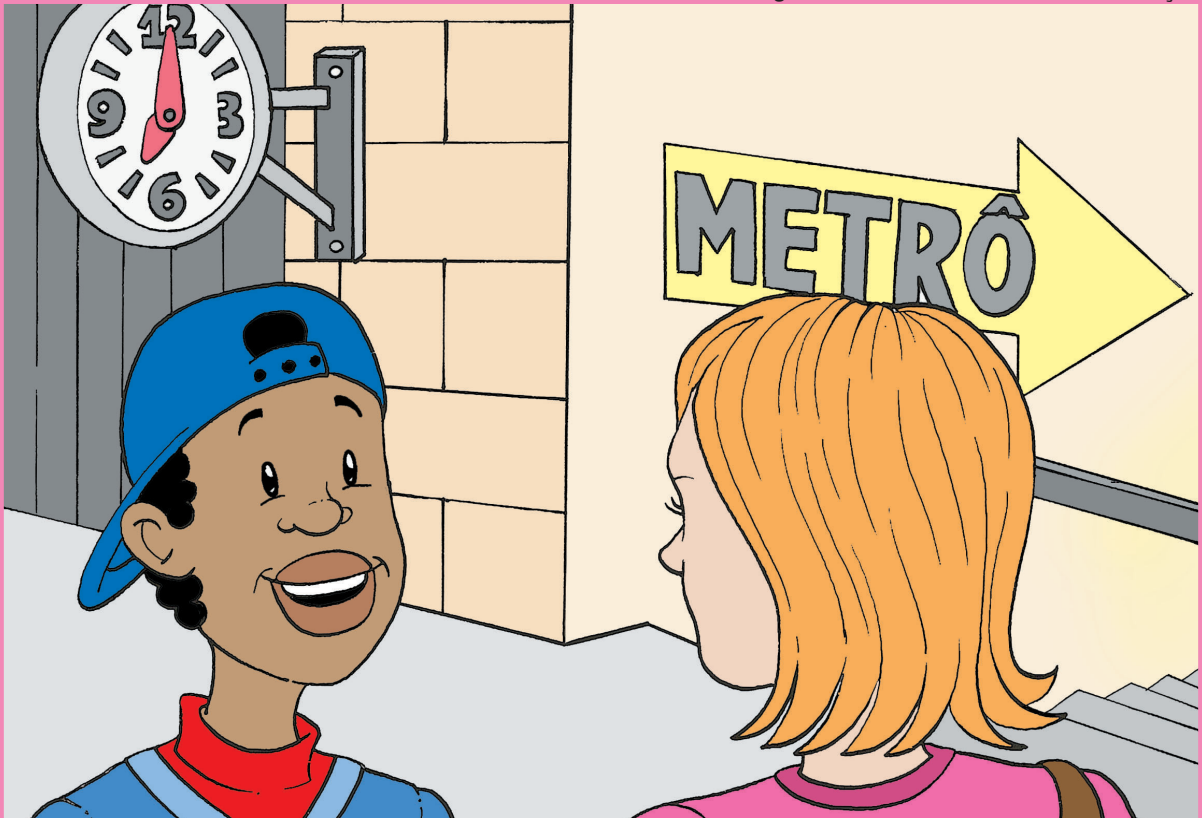
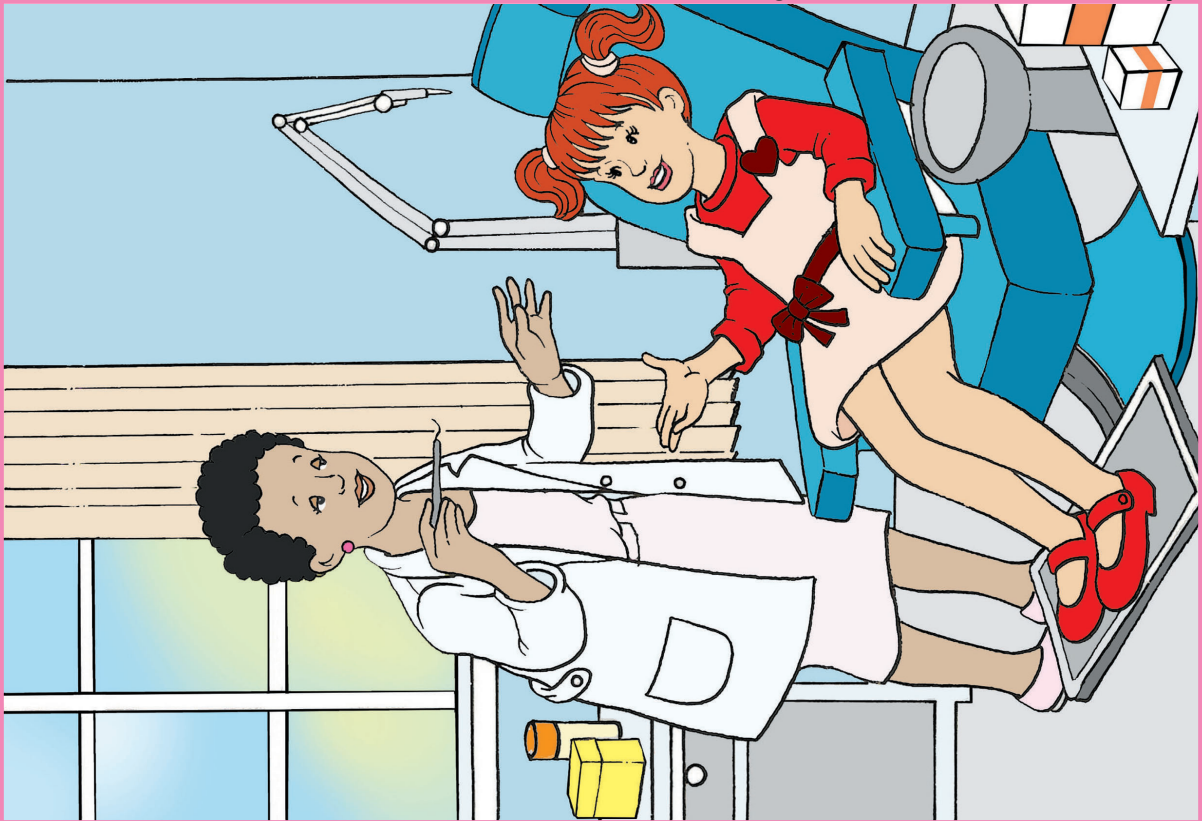
Ronice Müller de Quadros – Carina Rebello Cruz

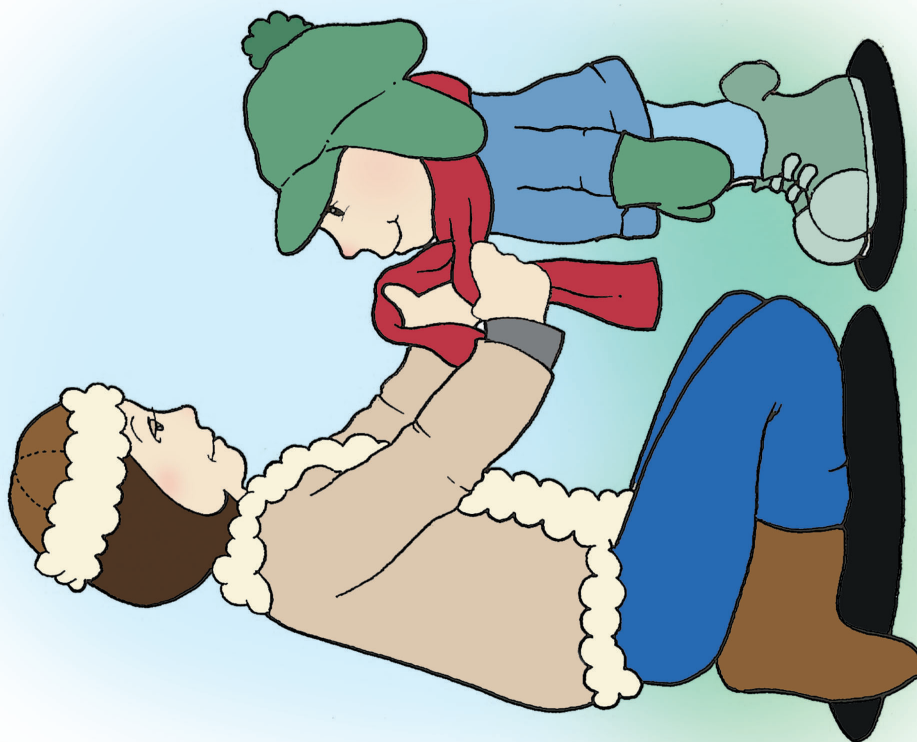


Ronice Müller de Quadros – Carina Rebello Cruz



Ronice Müller de Quadros – Carina Rebello Cruz





Ronice Müller de Quadros – Carina Rebelo Cruz





# Fichas para aplicação das tarefas de demonstração – Fase III

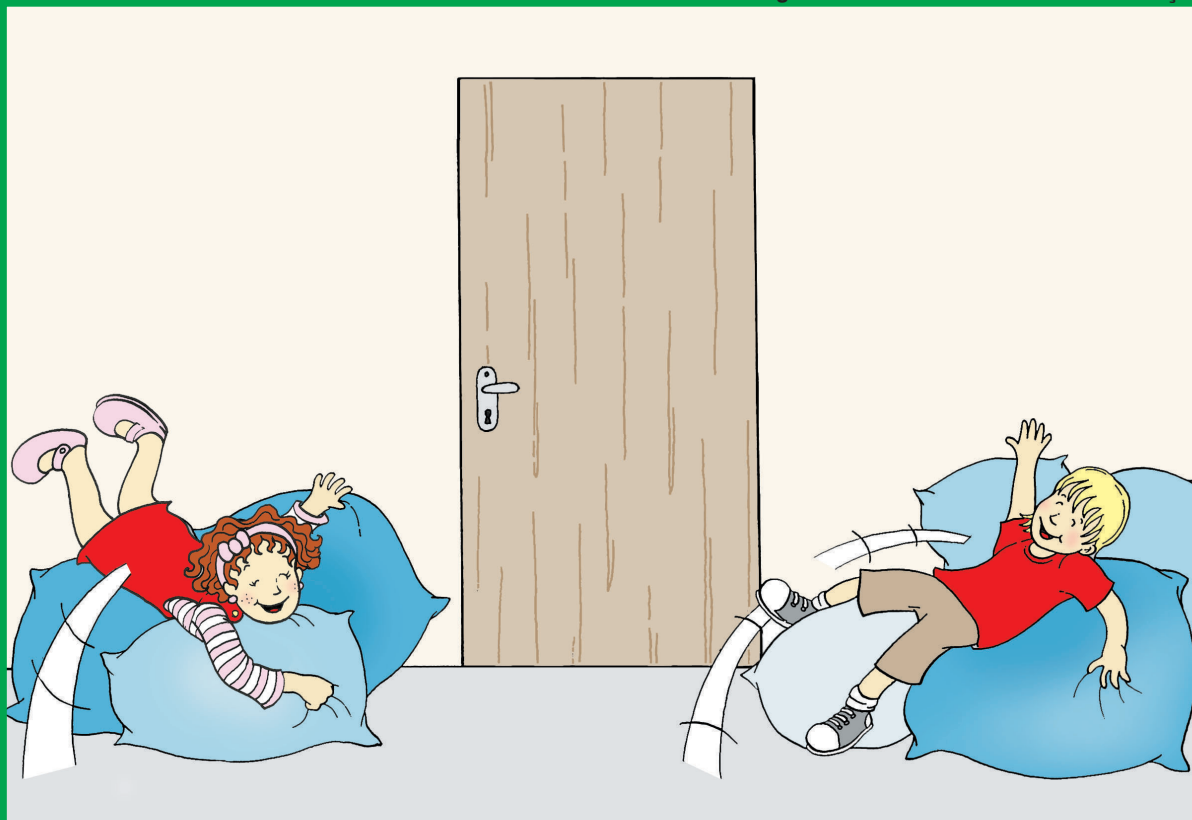
Lingua de Sinais – Instrumentos de avaliação



Ronice Müller de Quadros – Carina Rebello Cruz

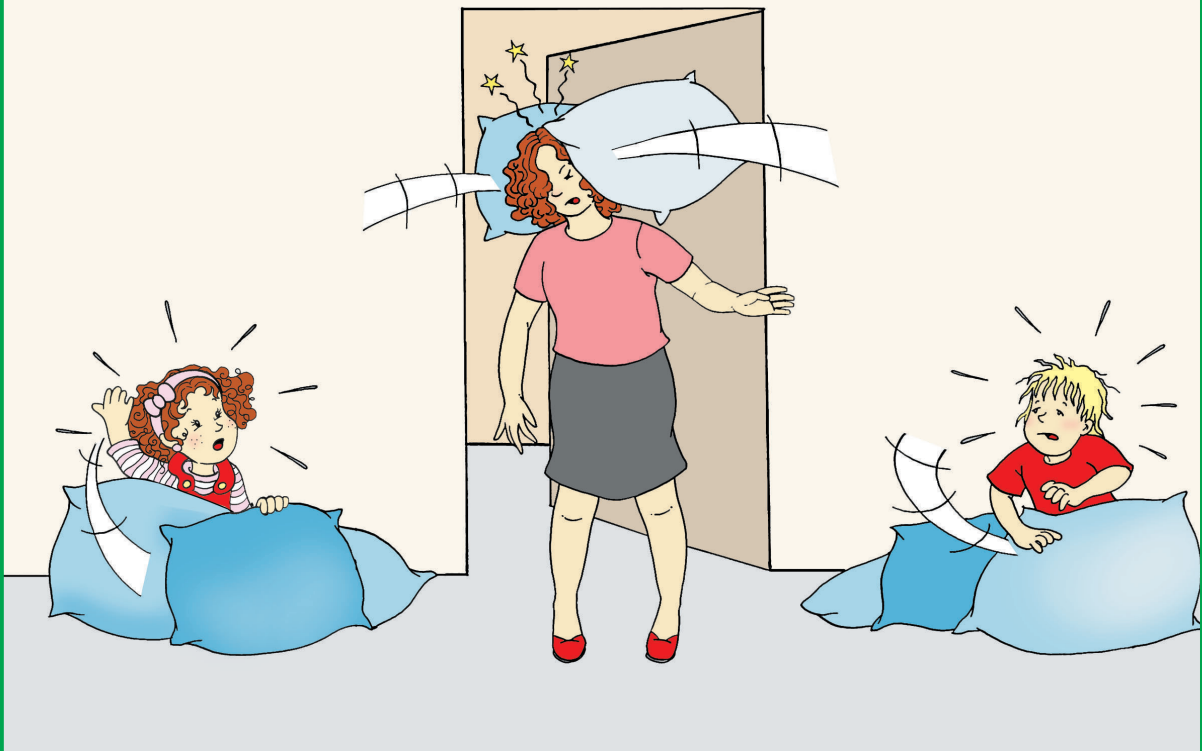
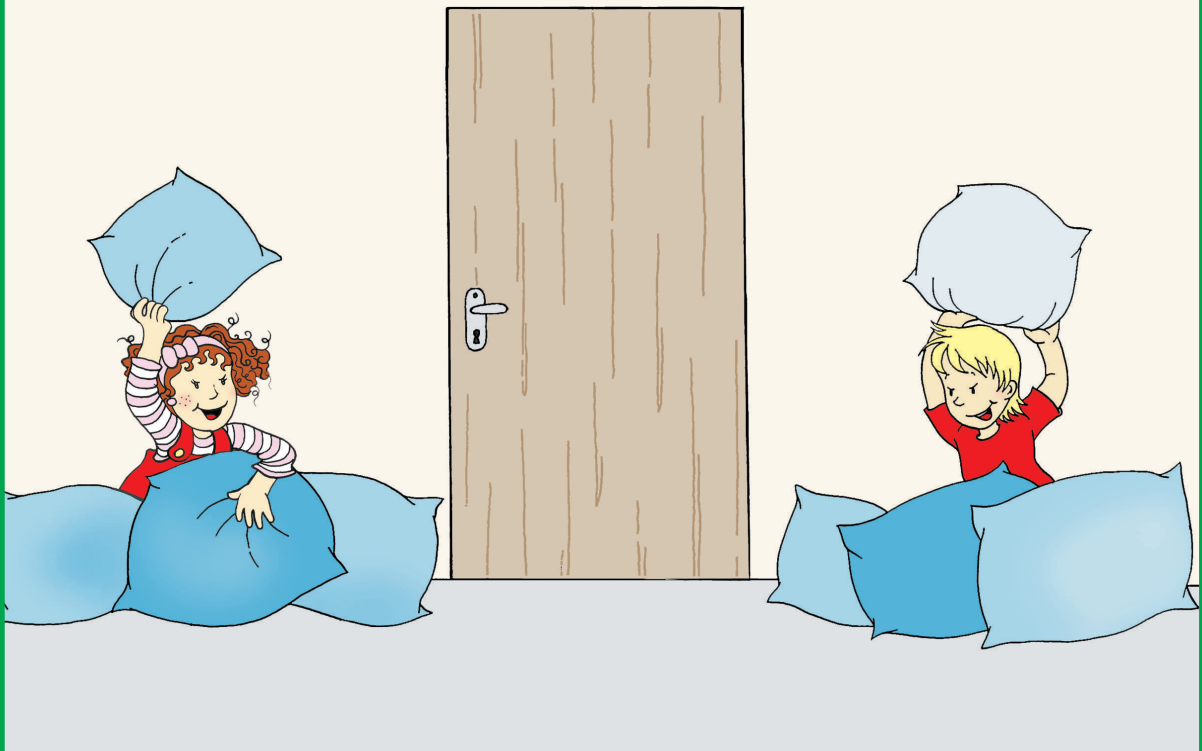


Lingua de Sinais – Instrumentos de avaliação



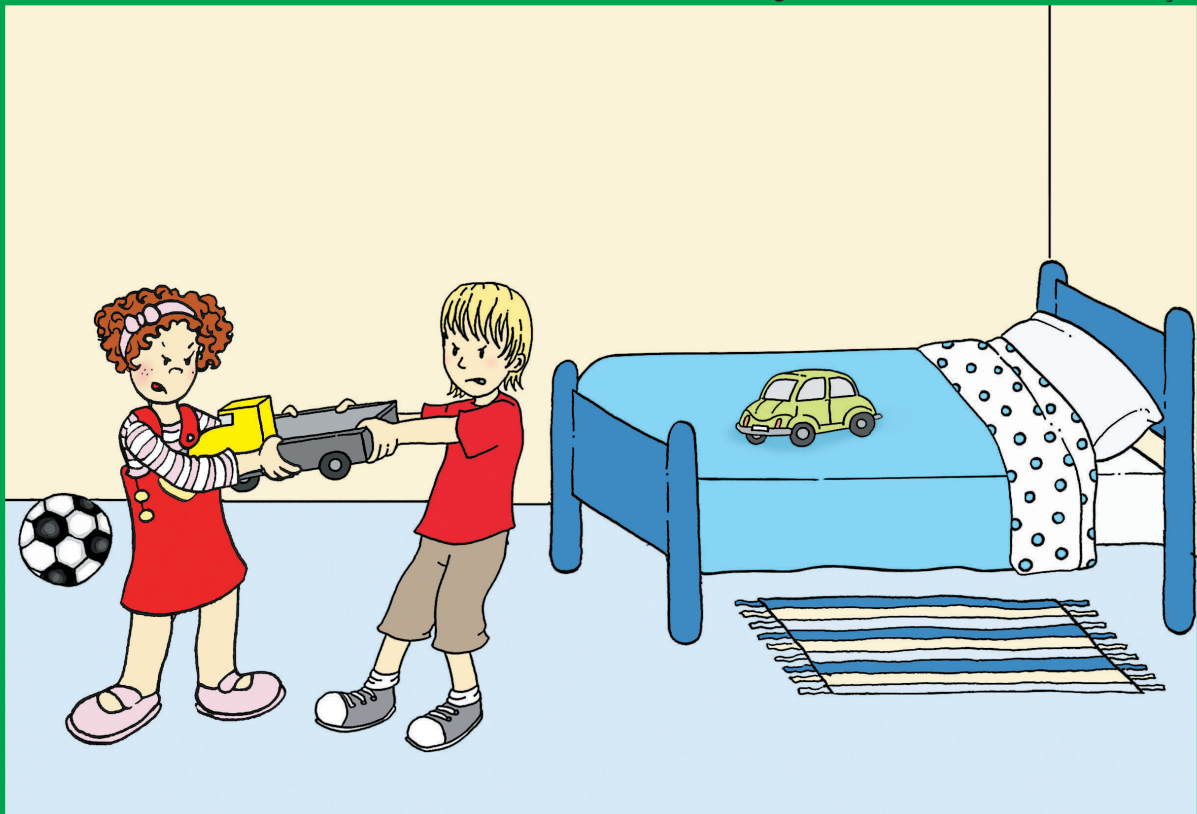
Ronice Müller de Quadros – Carina Rebello Cruz



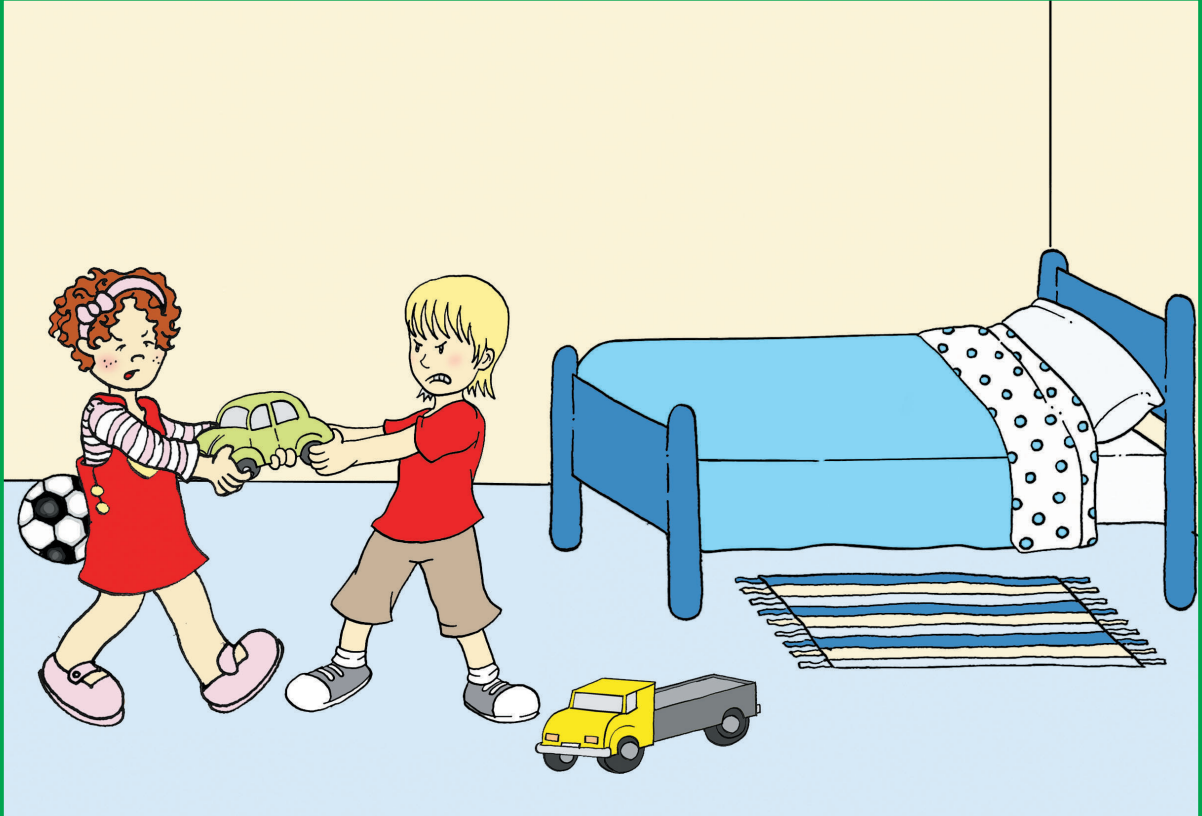




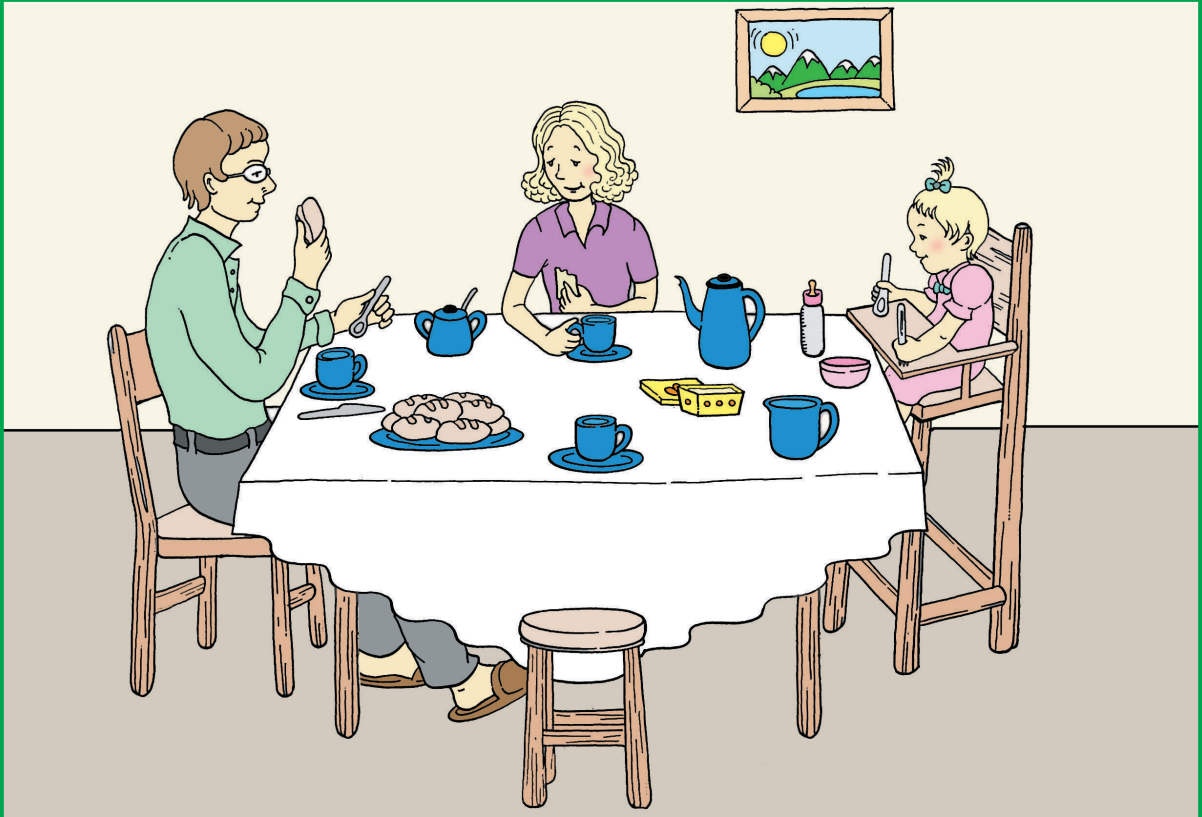
Ronice Müller de Quadros – Carina Rebelo Cruz



Ronice Müller de Quadros – Carina Rebelo Cruz



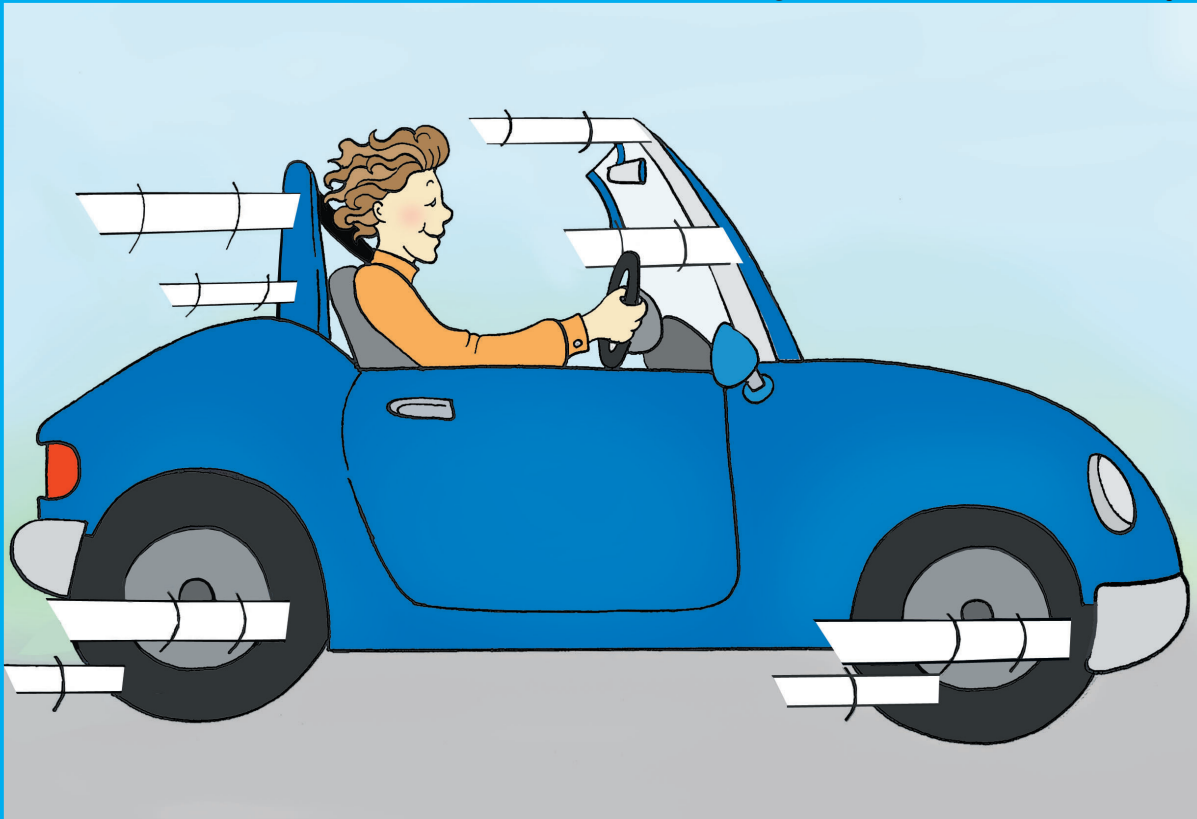
Ronice Müller de Quadros – Carina Rebelo Cruz



Ronice Müller de Quadros – Carina Rebelo Cruz

# Fichas para aplicação das tarefas de avaliação – Fase I

Língua de Sinais – Instrumentos de avaliação



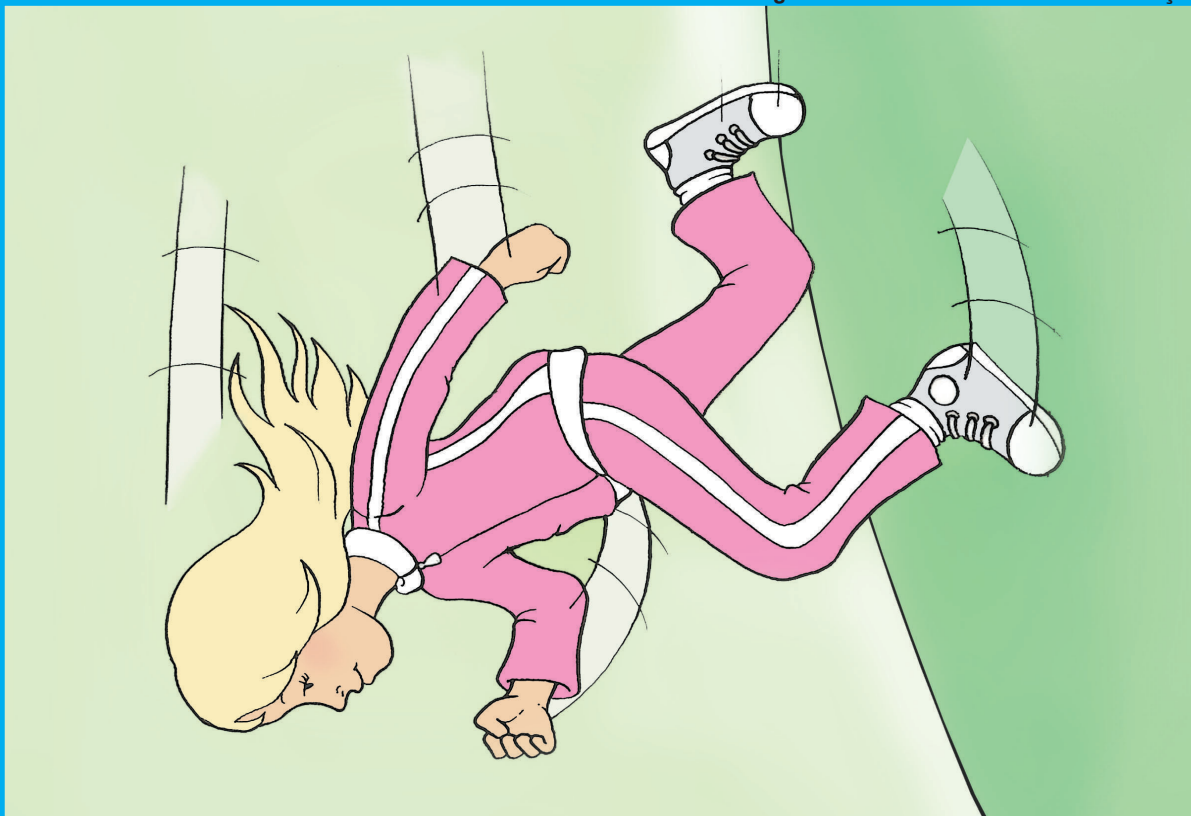
Ronice Müller de Quadros – Carina Rebello Cruz



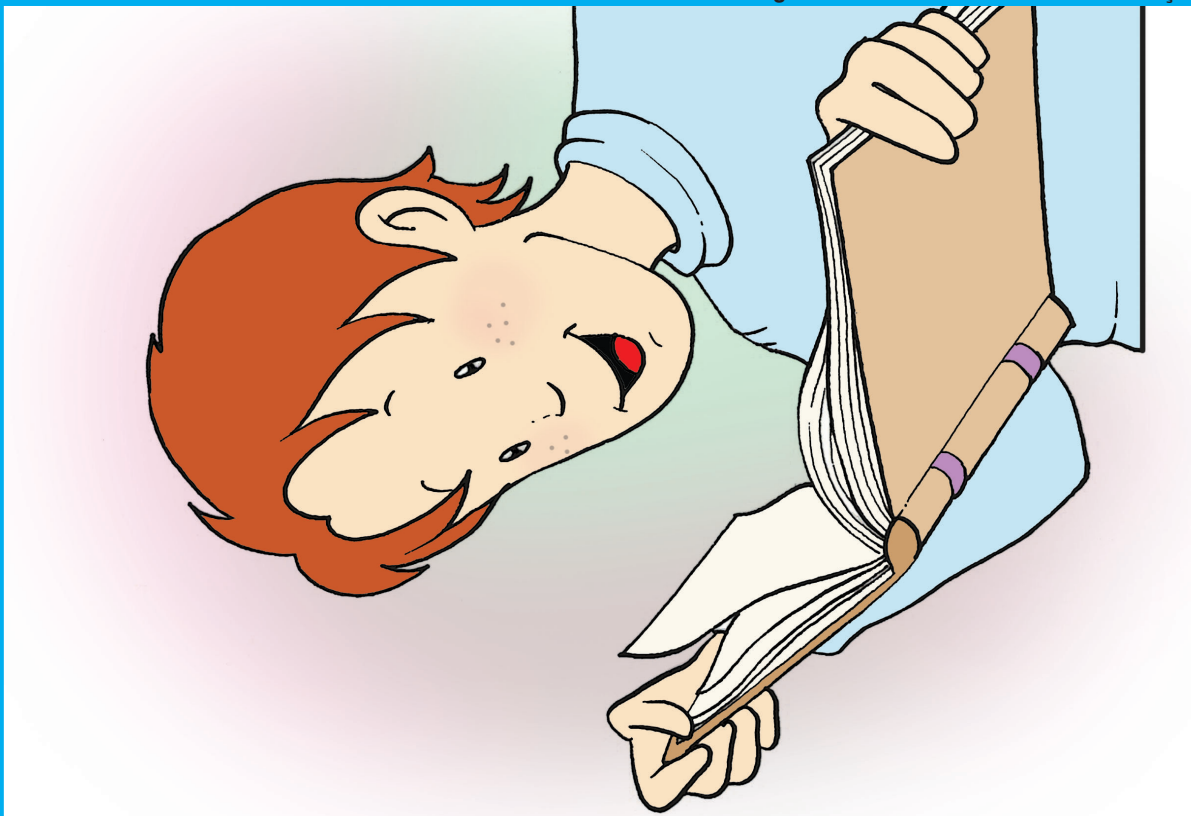
Língua de Sinais – Instrumentos de avaliação



Ronice Müller de Quadros – Carina Rebello Cruz

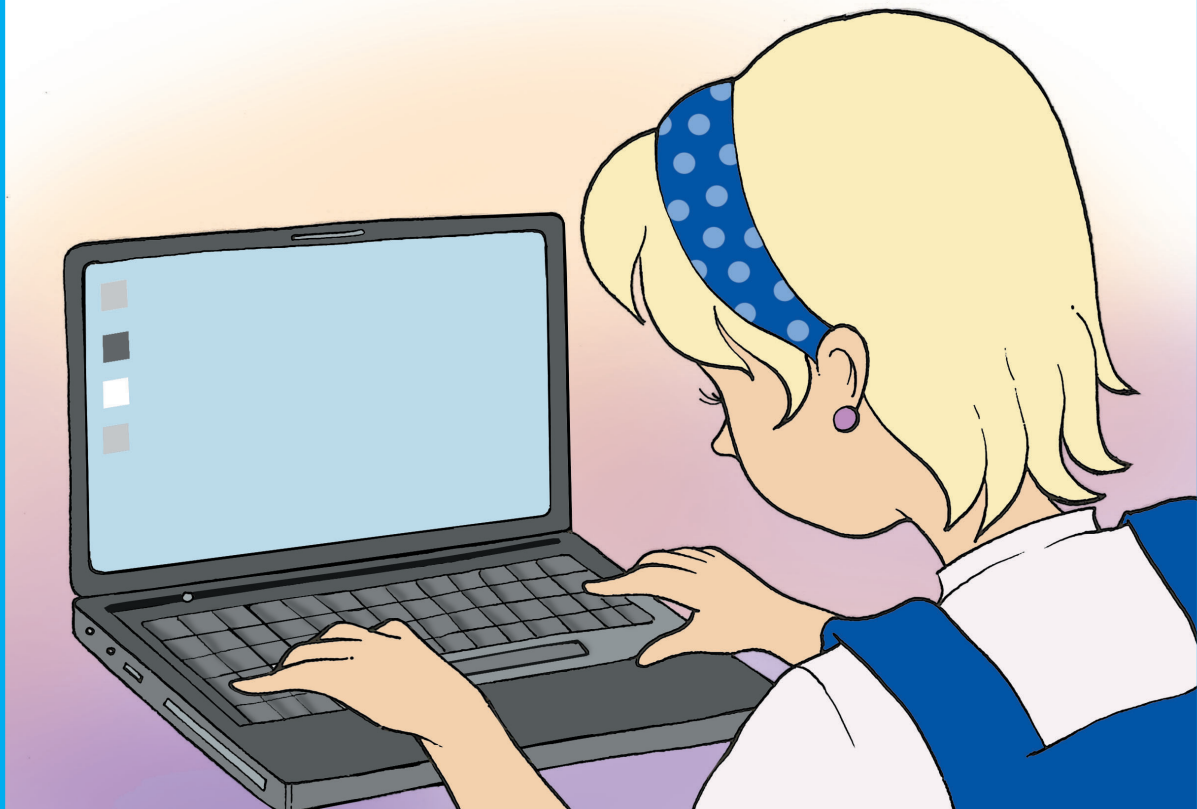
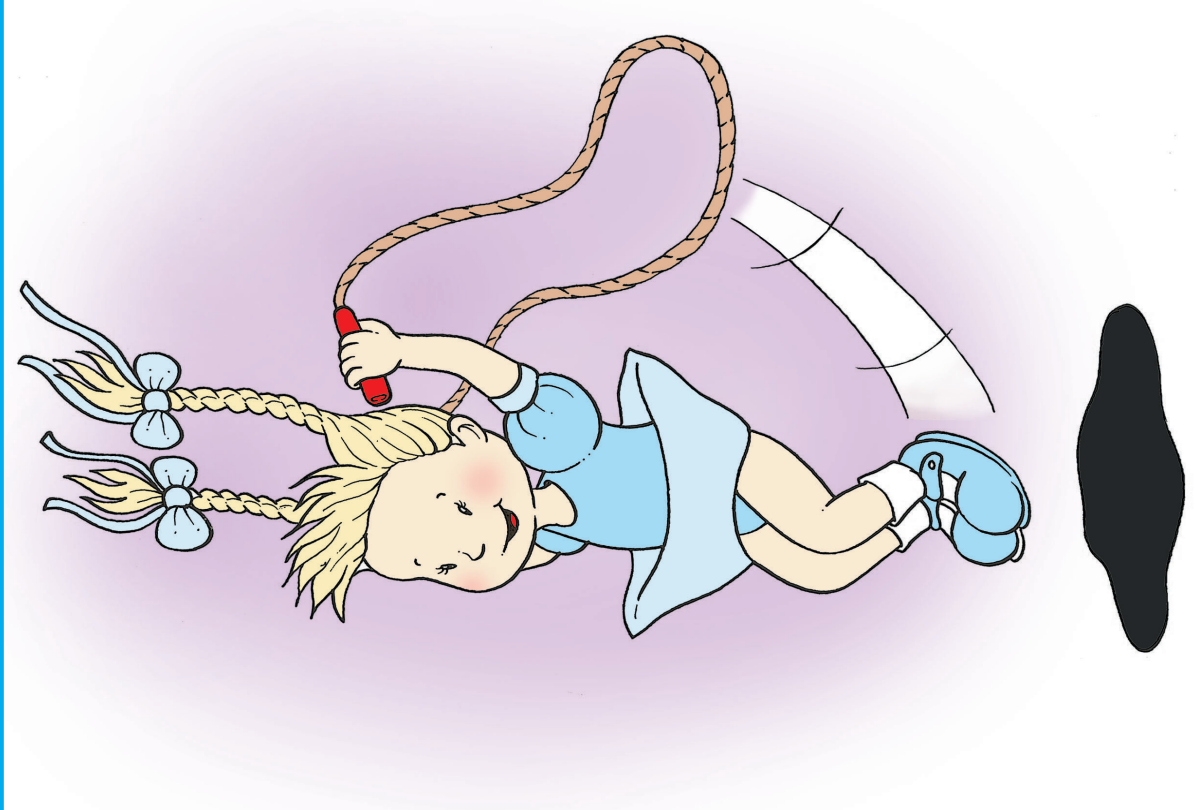


Ronice Müller de Quadros – Carina Rebelo Cruz



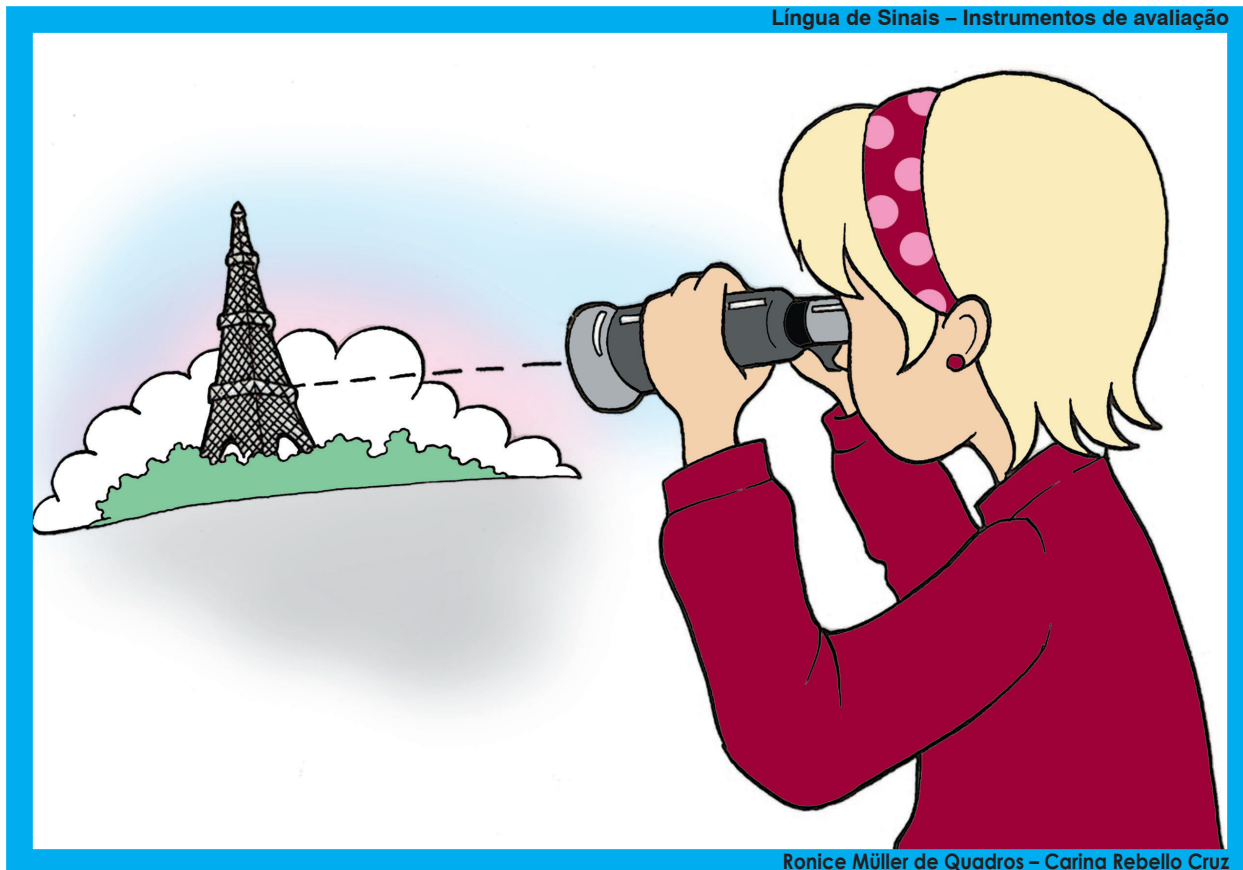
Ronice Müller de Quadros – Carina Rebelo Cruz



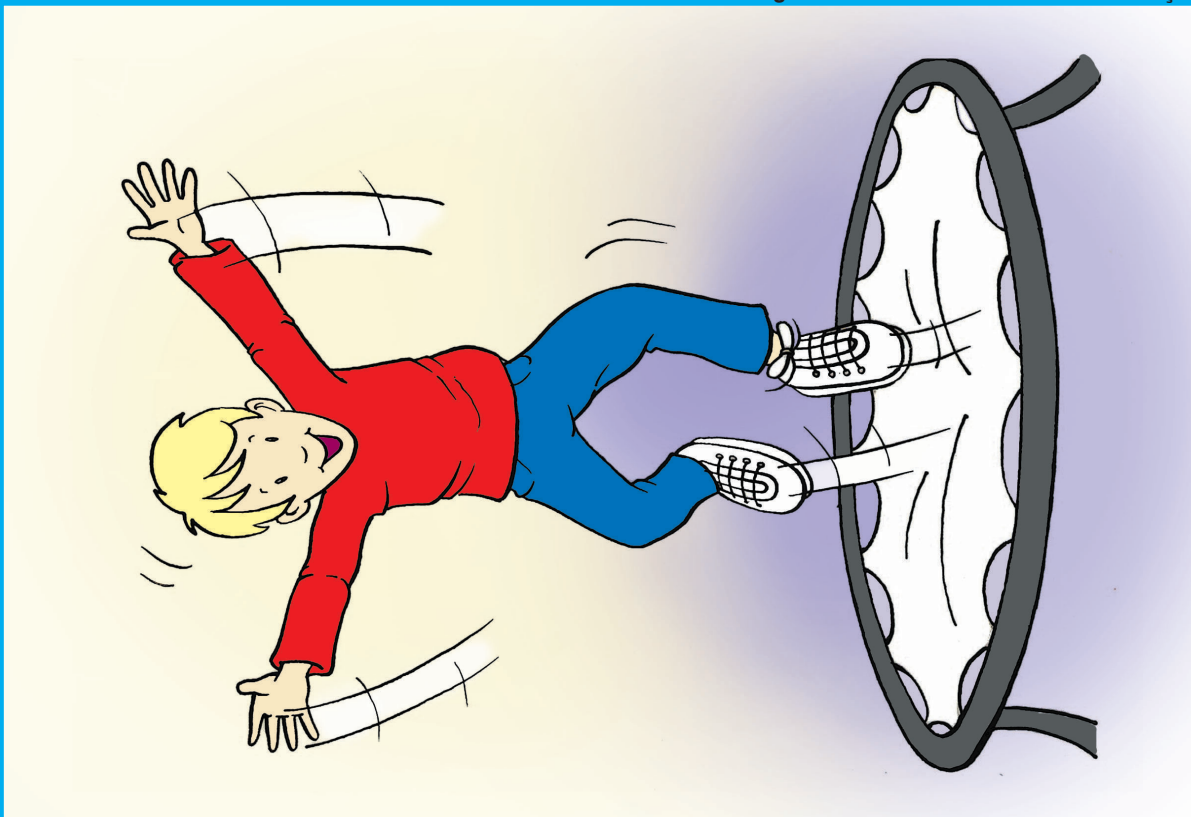




Ronice Müller de Quadros – Carina Rebelo Cruz



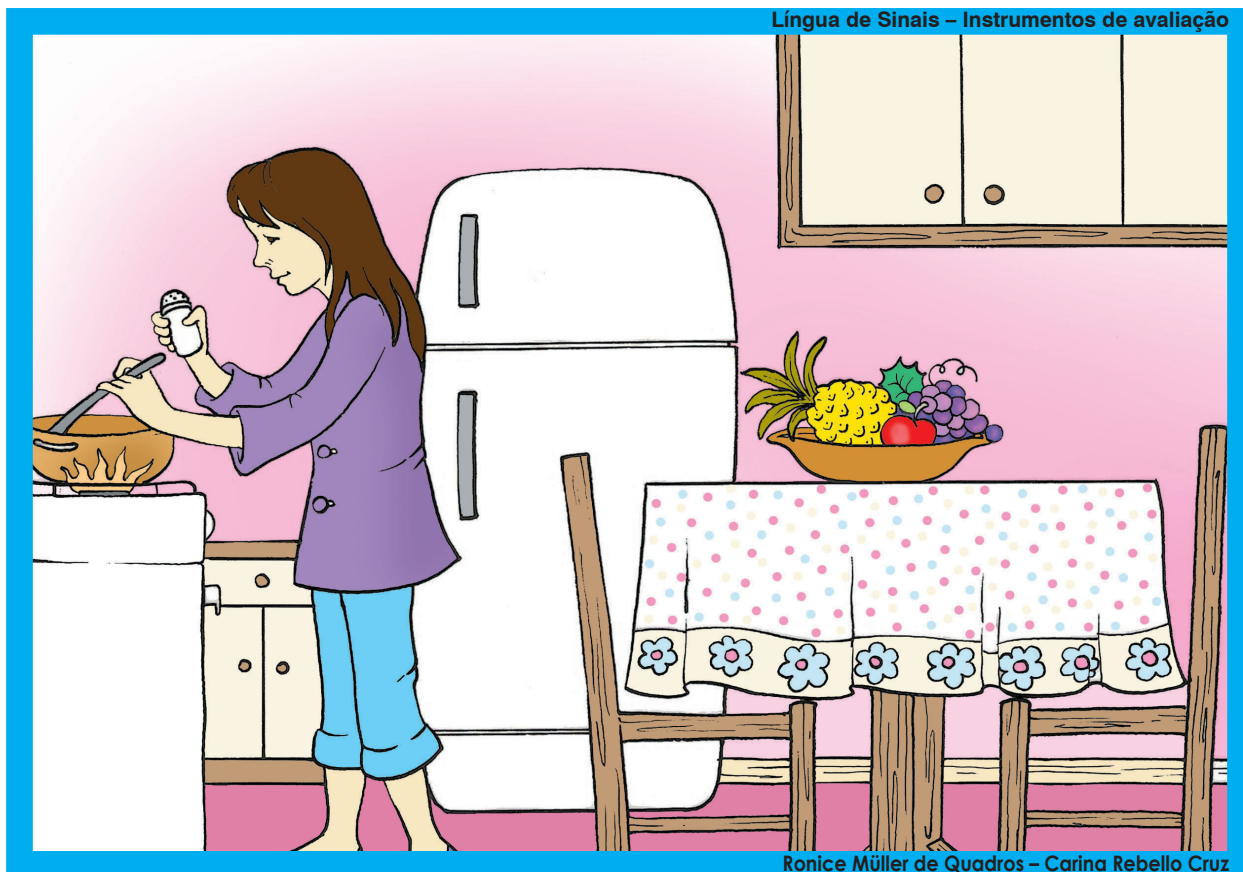
Ronice Müller de Quadros – Carina Rebelo Cruz



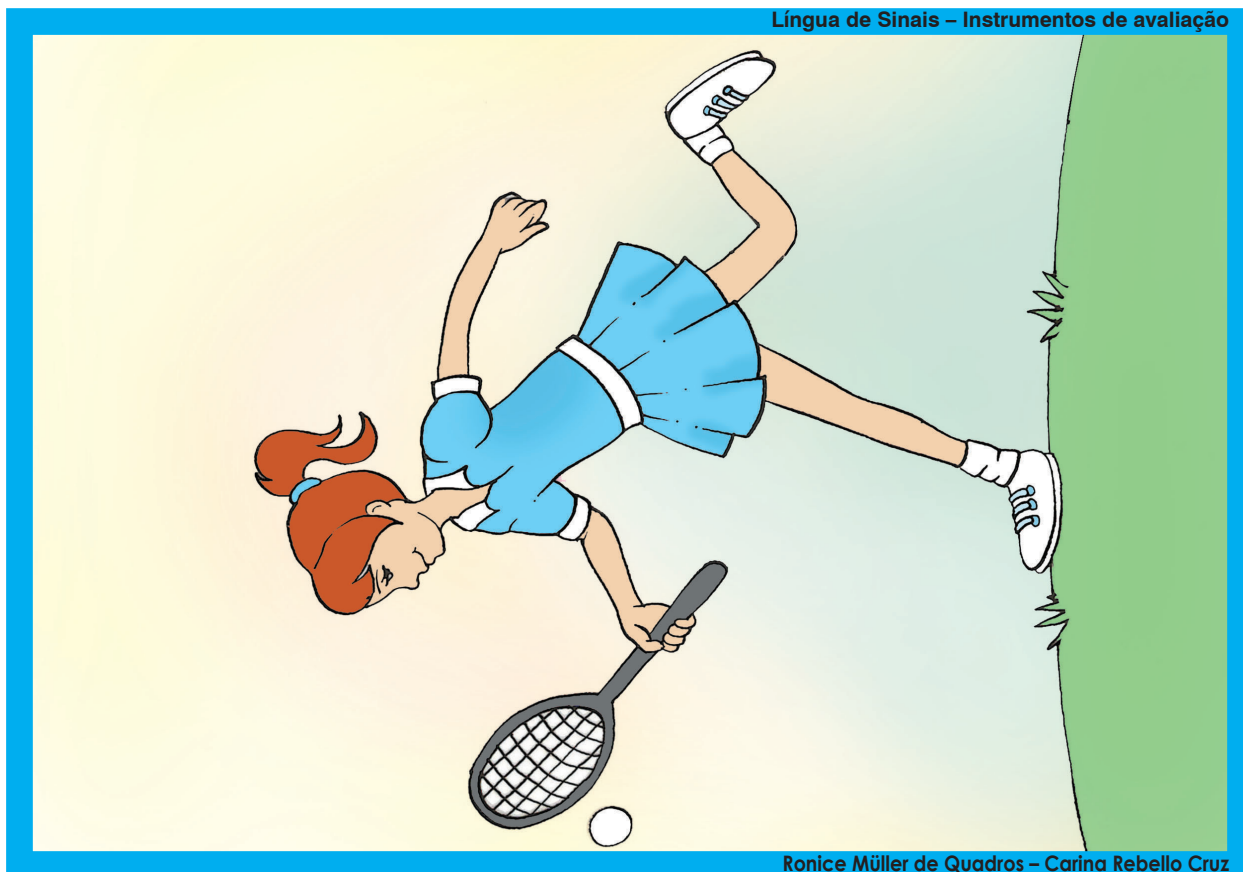
Ronice Müller de Quadros – Carina Rebelo Cruz



Ronice Müller de Quadros – Carina Rebelo Cruz

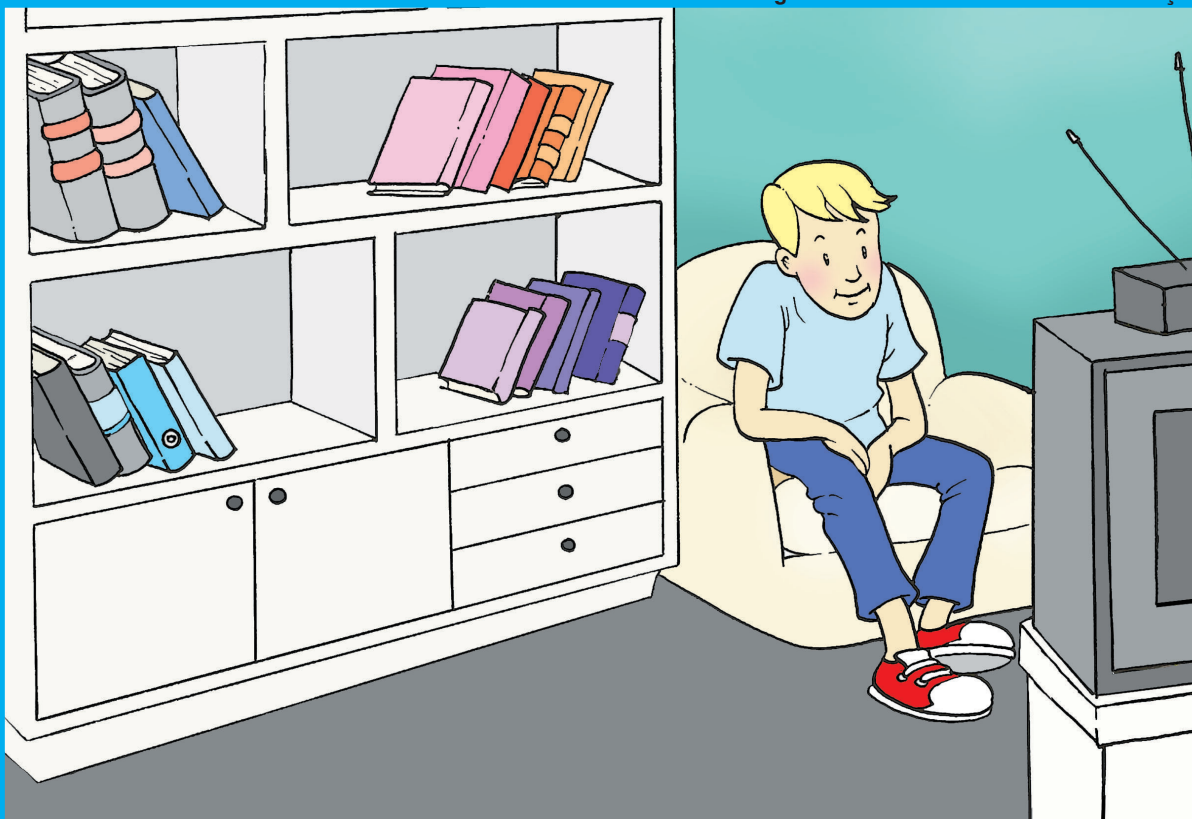


Ronice Müller de Quadros – Carina Rebello Cruz



Ronice Müller de Quadros – Carina Rebello Cruz





Ronice Müller de Quadros – Carina Rebello Cruz



Ronice Müller de Quadros – Carina Rebello Cruz





Ronice Müller de Quadros – Carina Rebelo Cruz

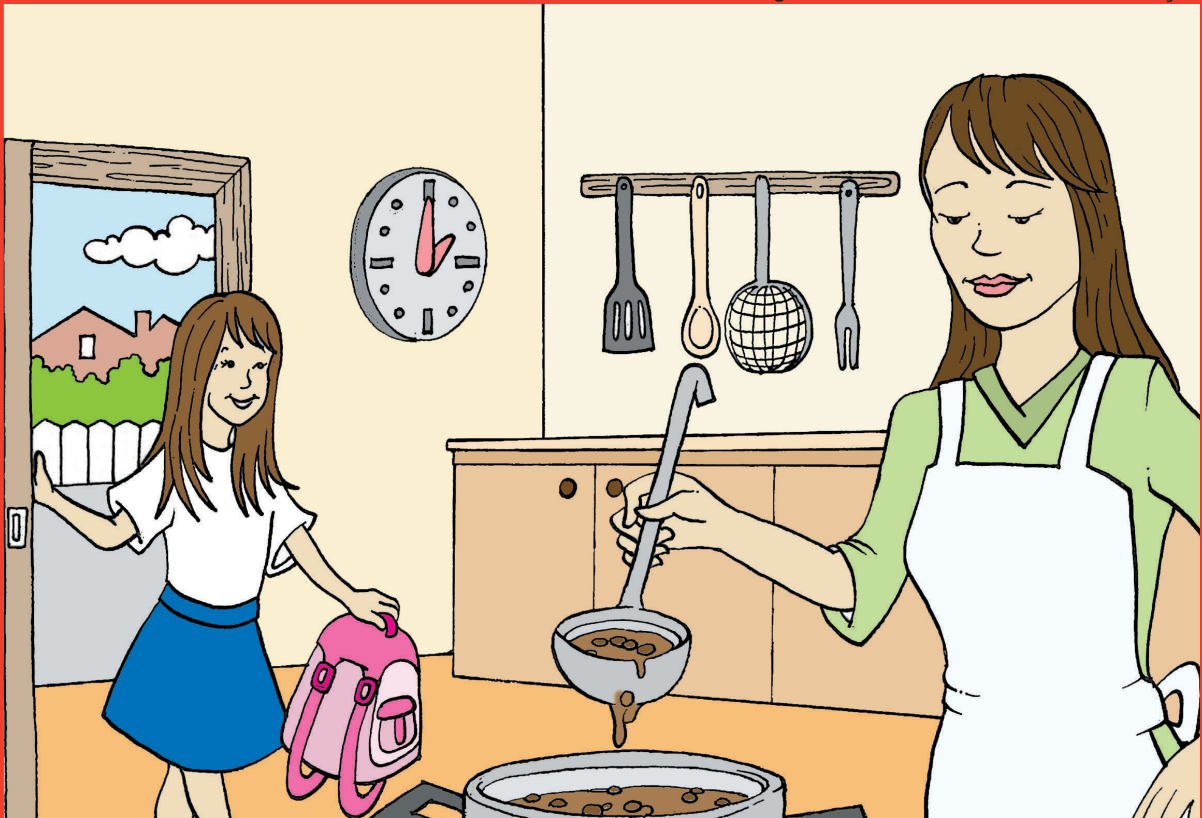


## Fichas para aplicação das tarefas de avaliação – Fase II

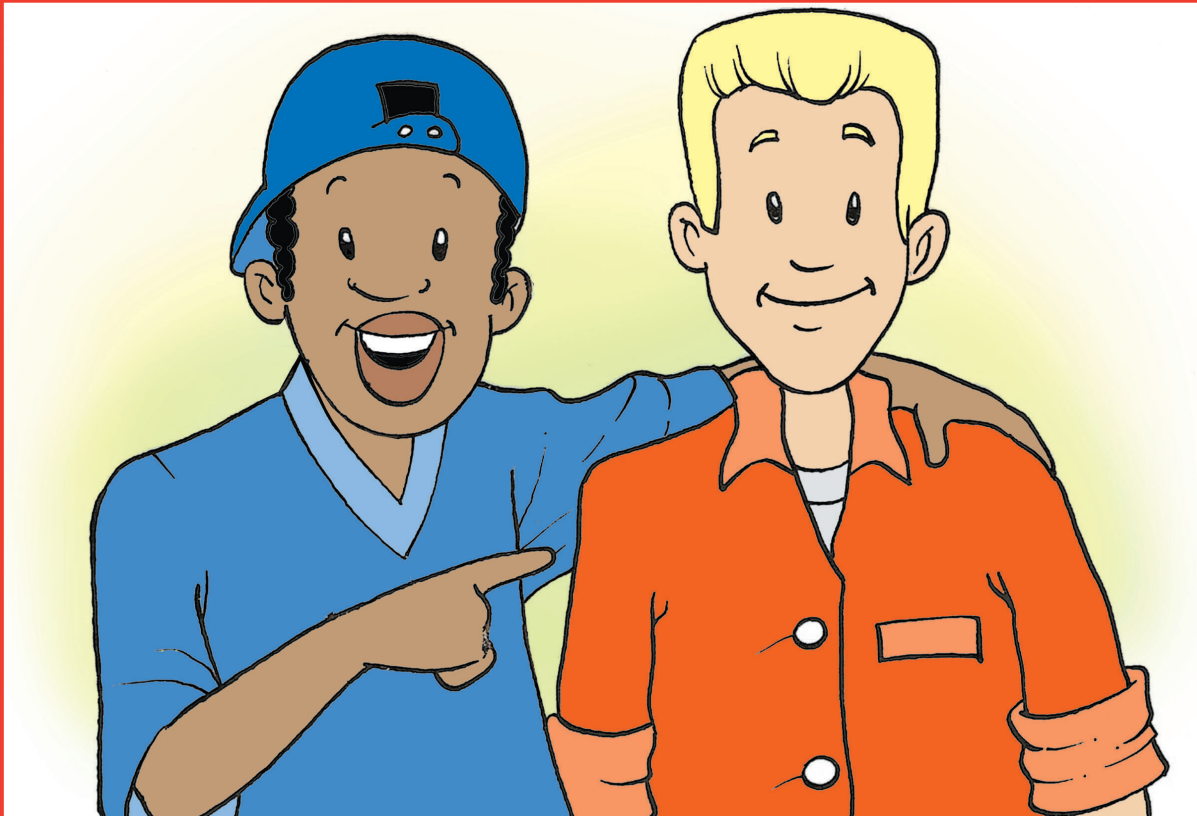




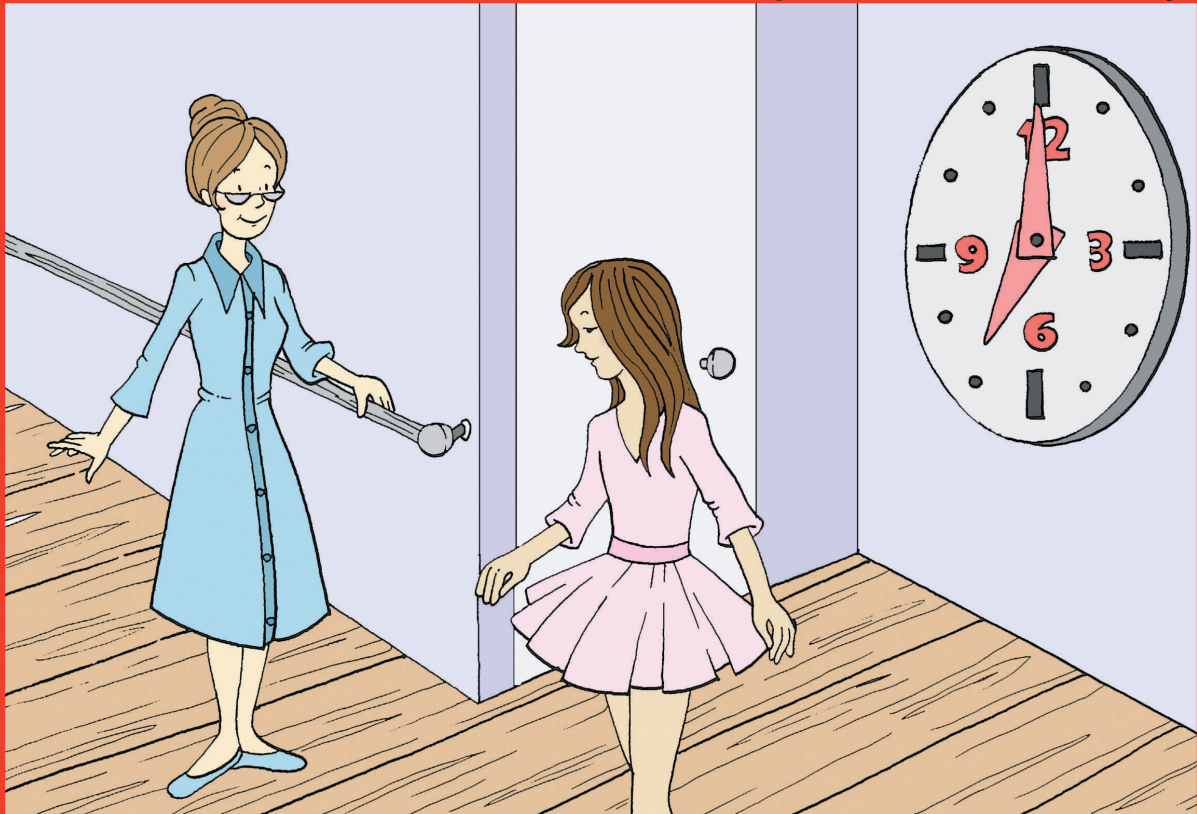
Ronice Müller de Quadros – Carina Rebello Cruz



Ronice Müller de Quadros – Carina Rebello Cruz



Ronice Müller de Quadros – Carina Rebello Cruz



Ronice Müller de Quadros – Carina Rebello Cruz

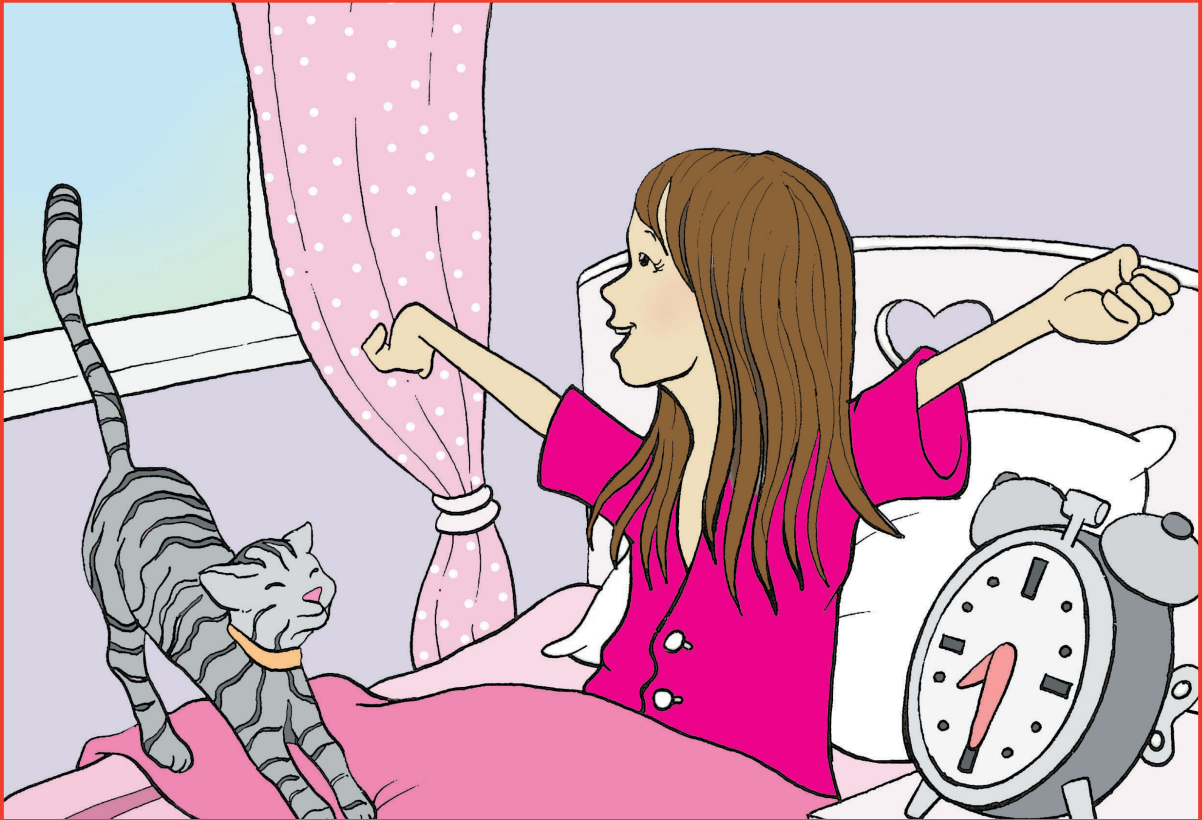




Ronice Müller de Quadros – Carina Rebelo Cruz



Ronice Müller de Quadros – Carina Rebelo Cruz



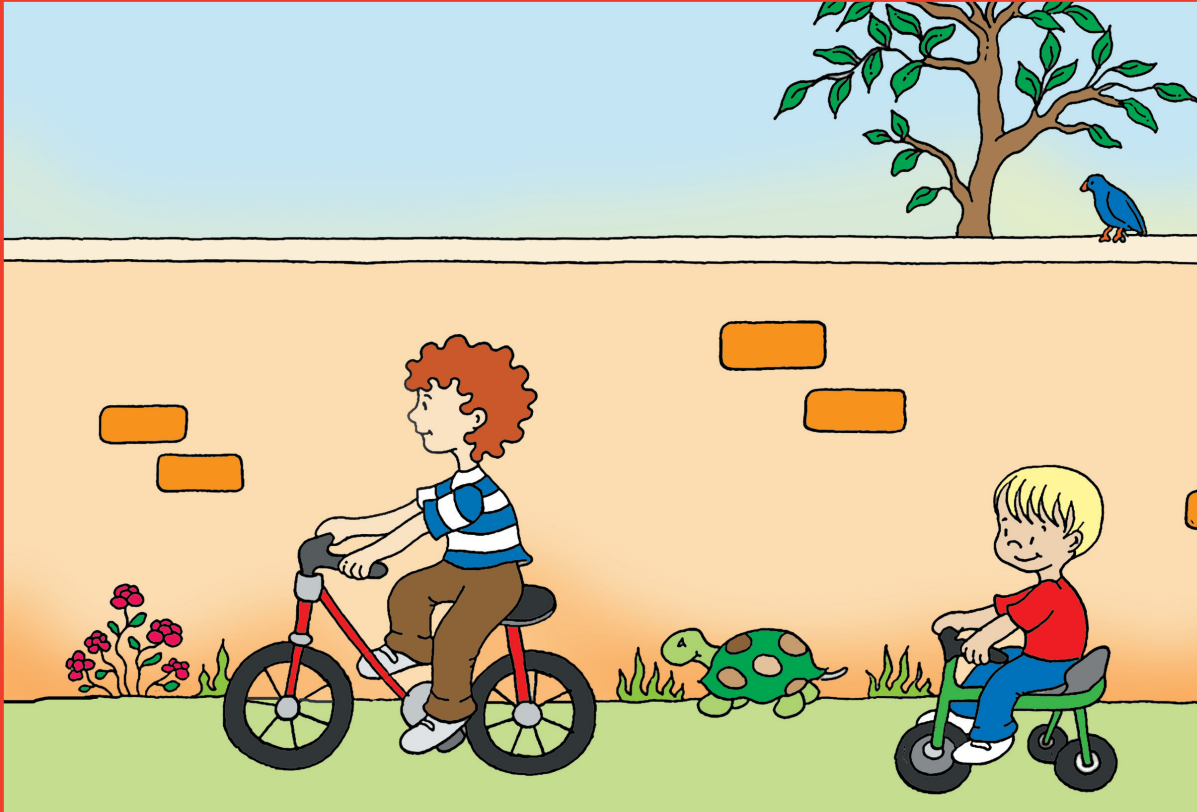
Ronice Müller de Quadros – Carina Rebelo Cruz



Ronice Müller de Quadros – Carina Rebelo Cruz

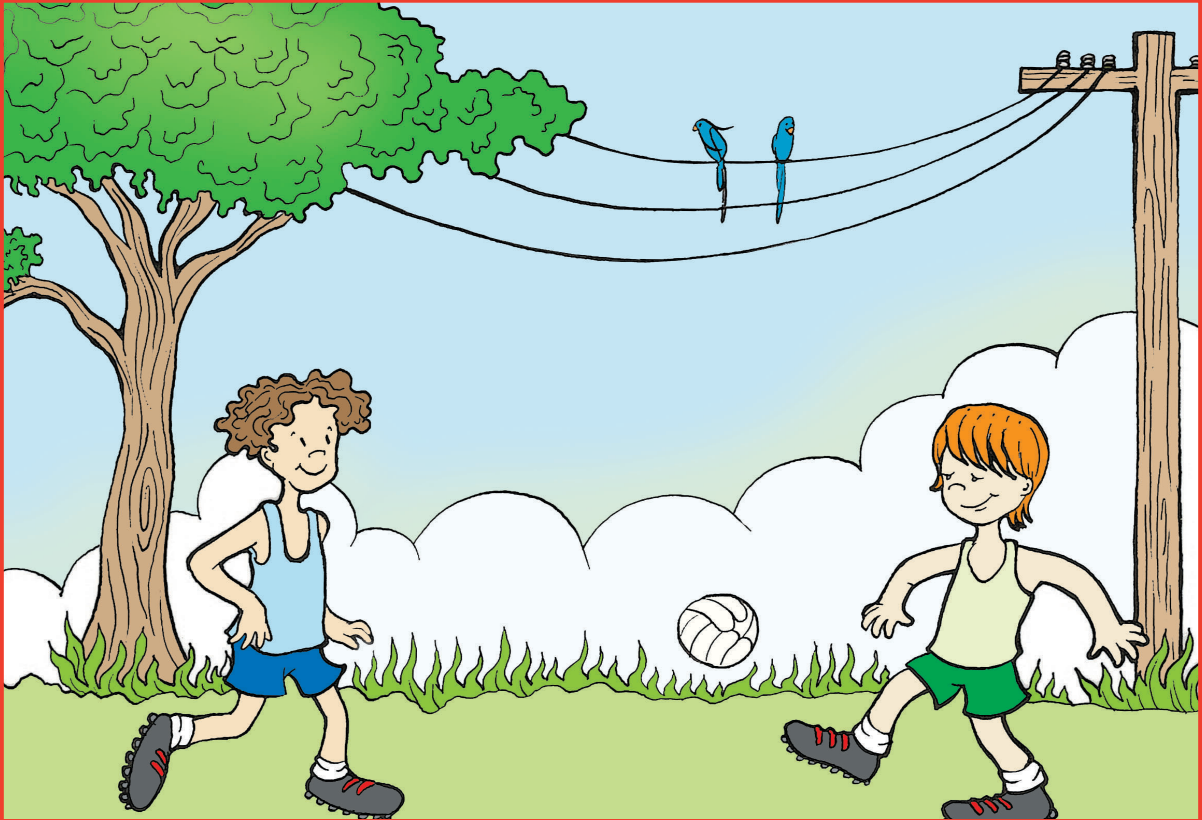


Ronice Müller de Quadros – Carina Rebello Cruz

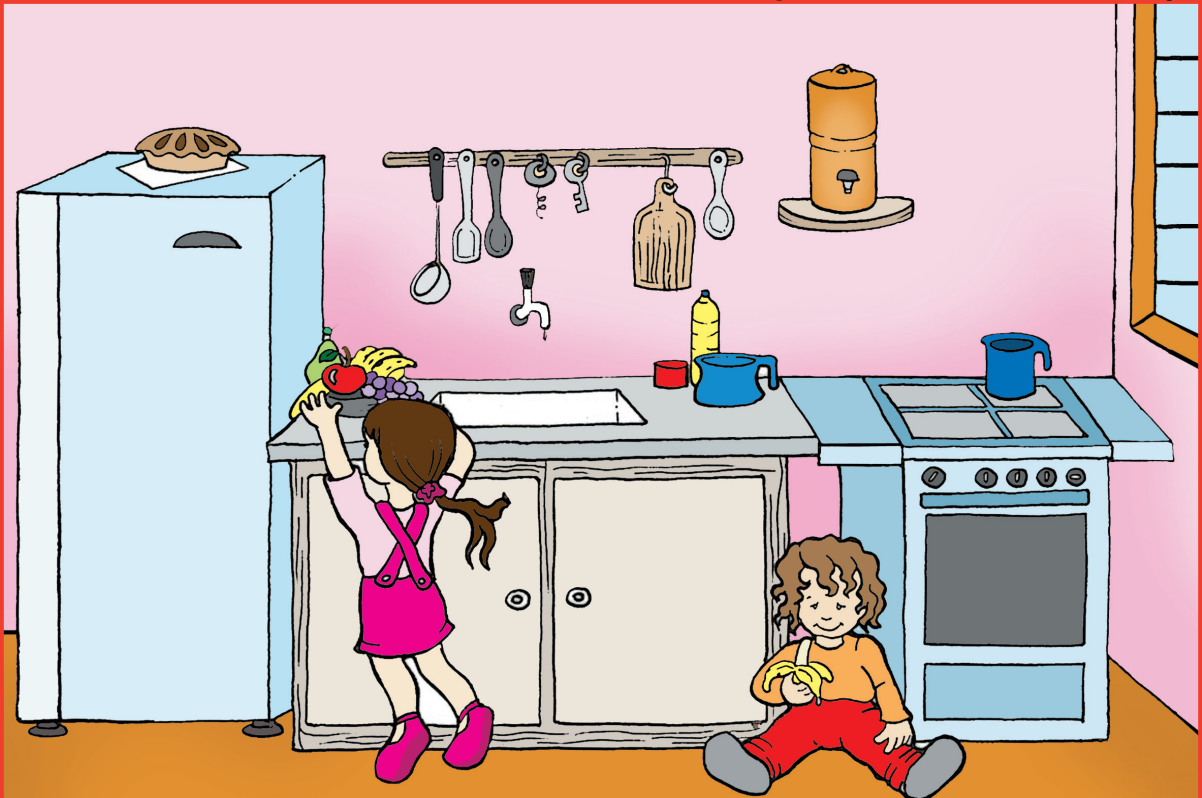


Ronice Müller de Quadros – Carina Rebello Cruz





Ronice Müller de Quadros – Carina Rebello Cruz



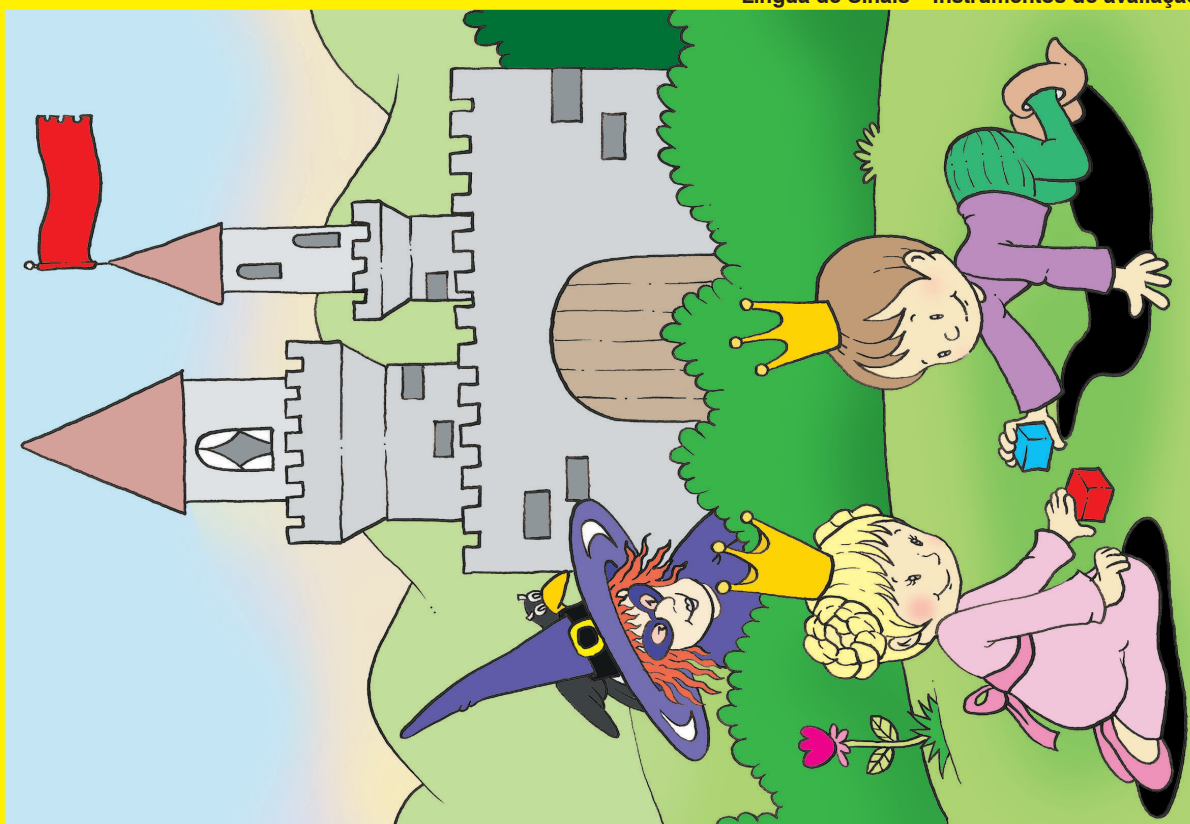
Ronice Müller de Quadros – Carina Rebello Cruz





# Fichas para aplicação da tarefa de avaliação – Fase III

Língua de Sinais – Instrumentos de avaliação



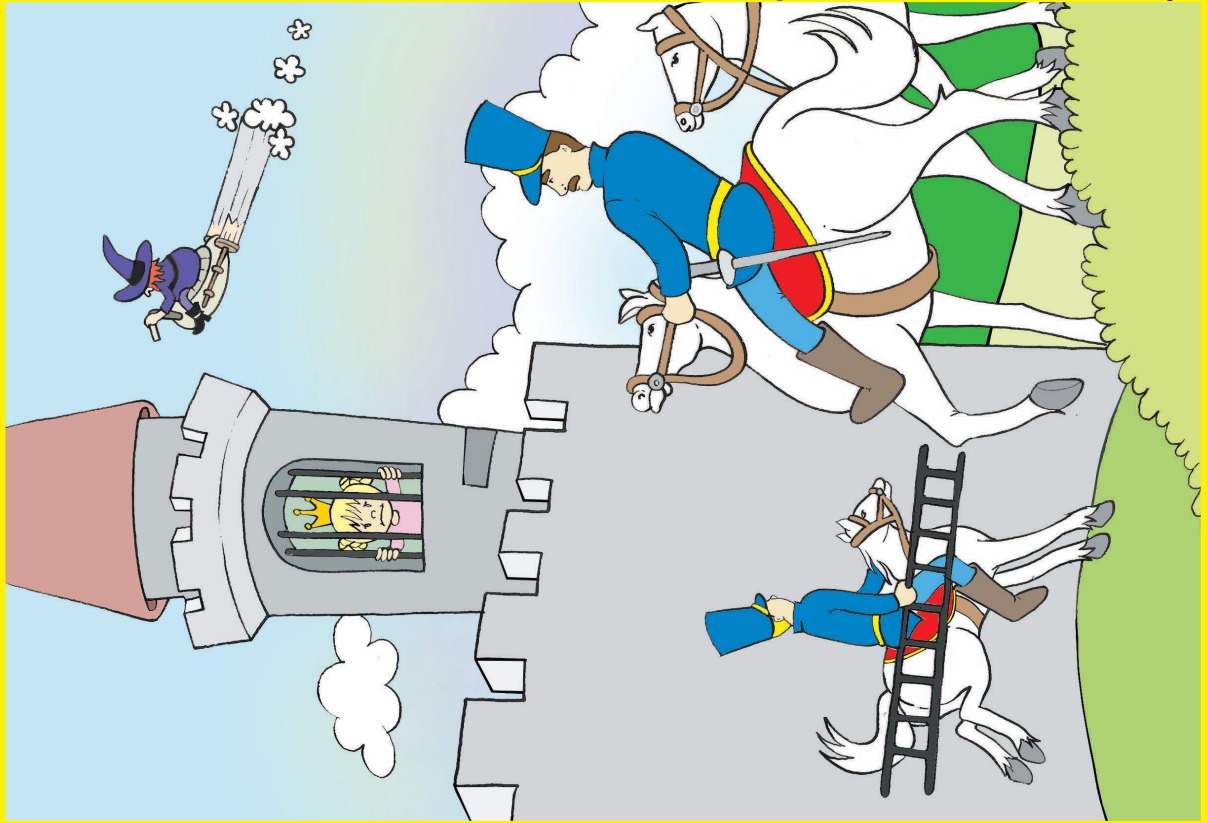
Ronice Müller de Quadros – Carina Rebelo Cruz



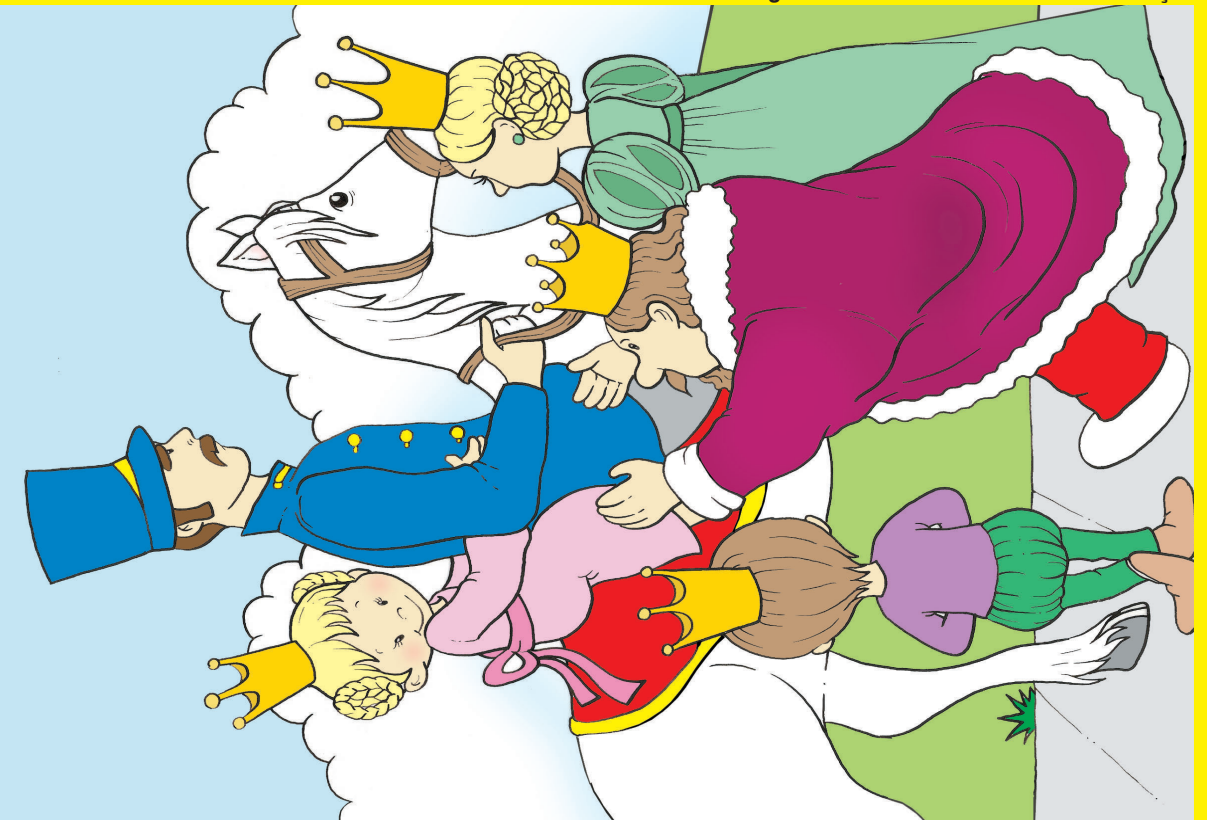
Língua de Sinais – Instrumentos de avaliação



Ronice Müller de Quadros – Carina Rebelo Cruz



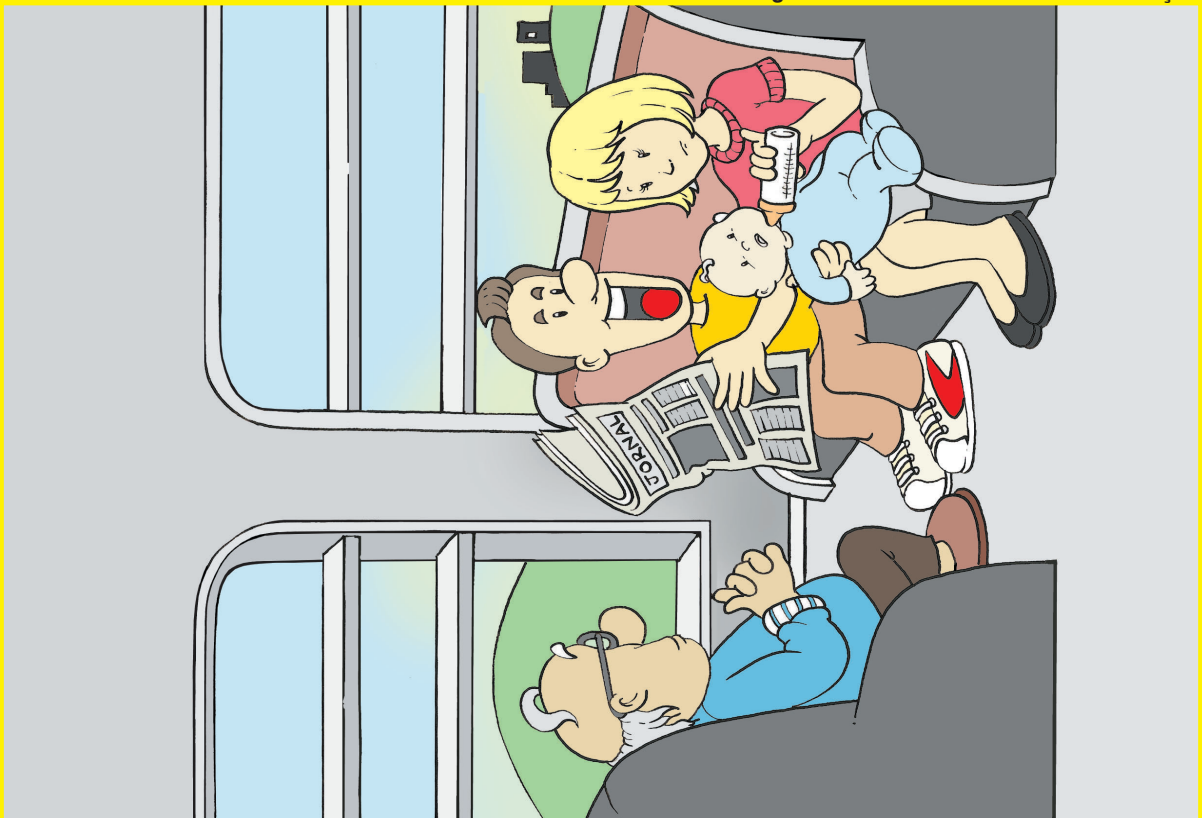
Ronice Müller de Quadros – Carina Rebello Cruz



Ronice Müller de Quadros – Carina Rebello Cruz

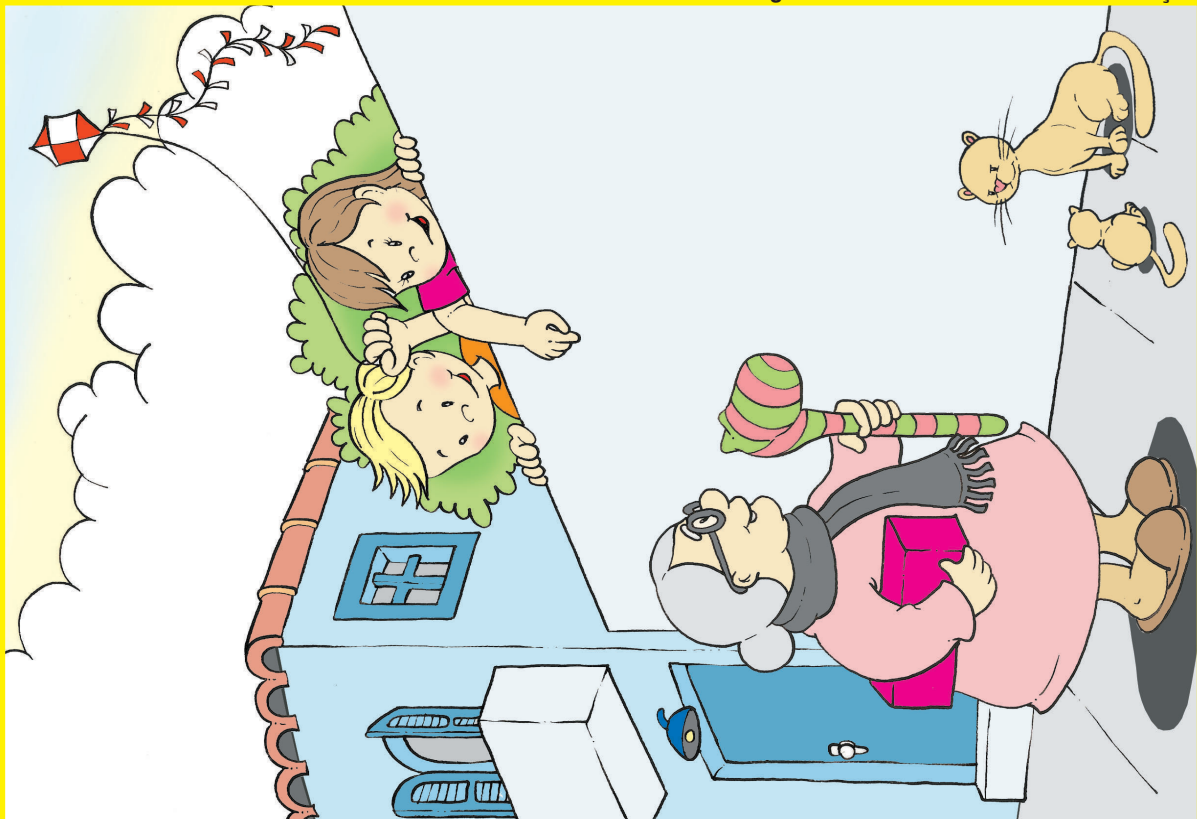


Ronice Müller de Quadros – Carina Rebello Cruz

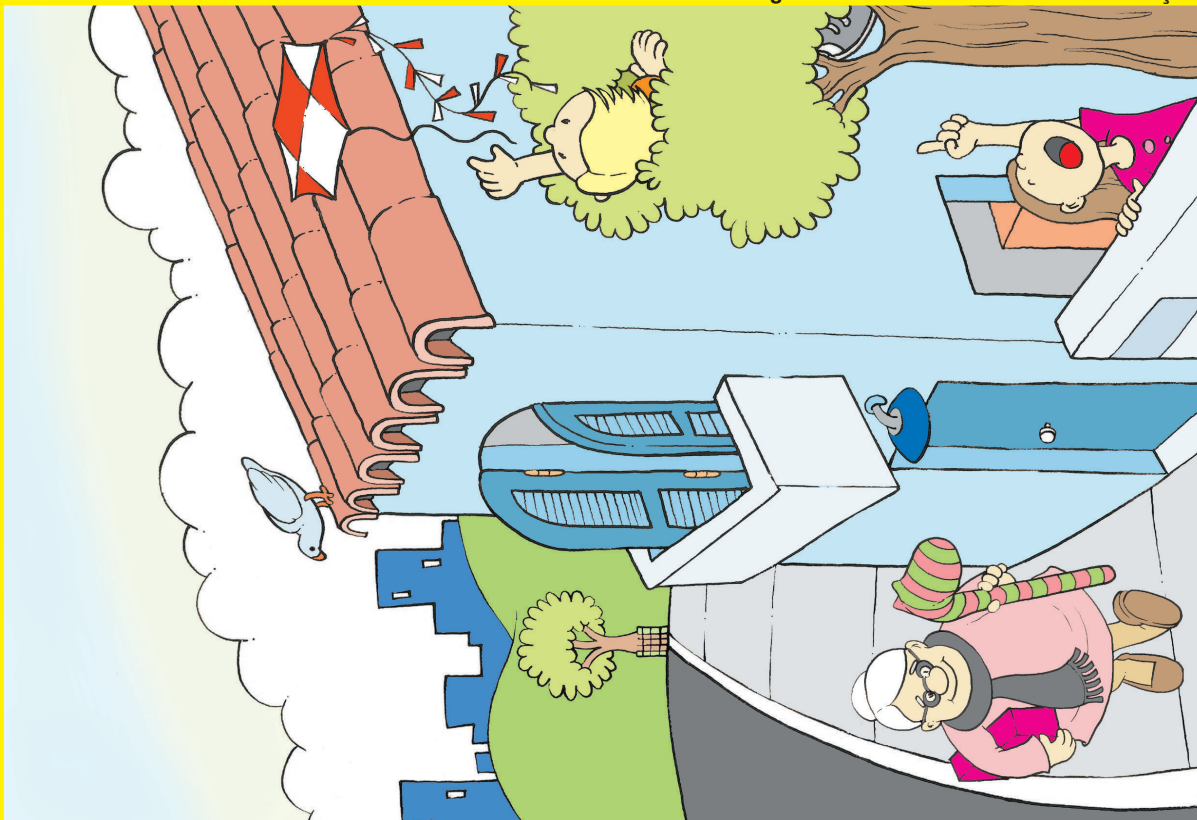


Ronice Müller de Quadros – Carina Rebello Cruz





Ronice Müller de Quadros – Carina Rebello Cruz



Ronice Müller de Quadros – Carina Rebello Cruz

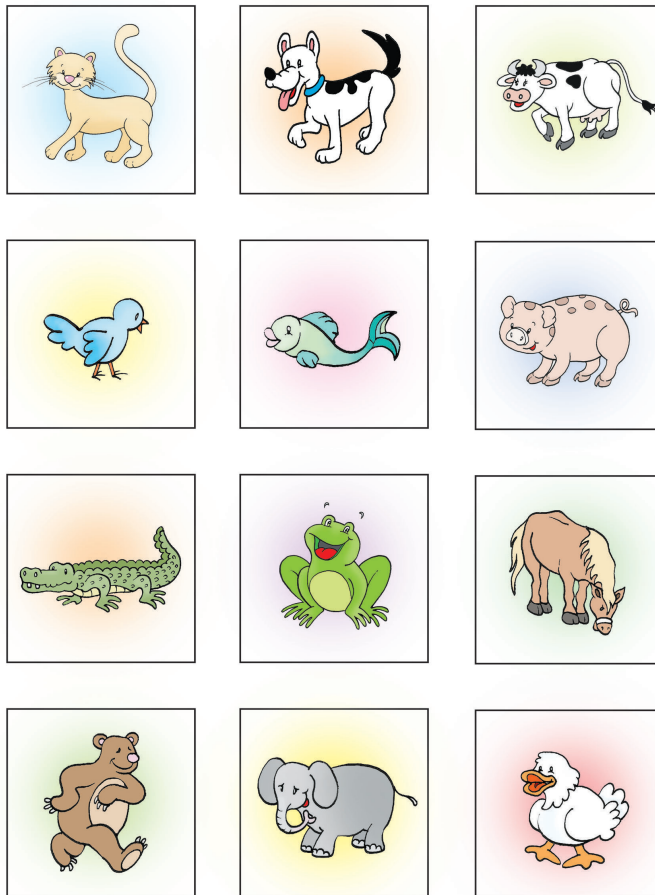
# Memória

Modelo 1



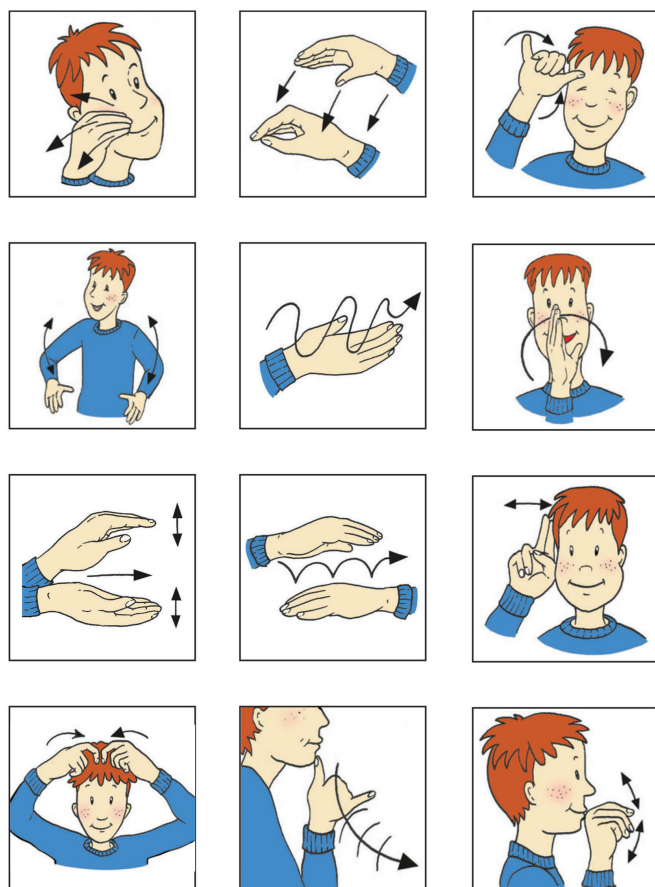
# Modelo 2

## Língua de Sinais – Instrumentos de avaliação



Ronice Müller de Quadros – Carina Rebello Cruz

## Língua de Sinais – Instrumentos de avaliação

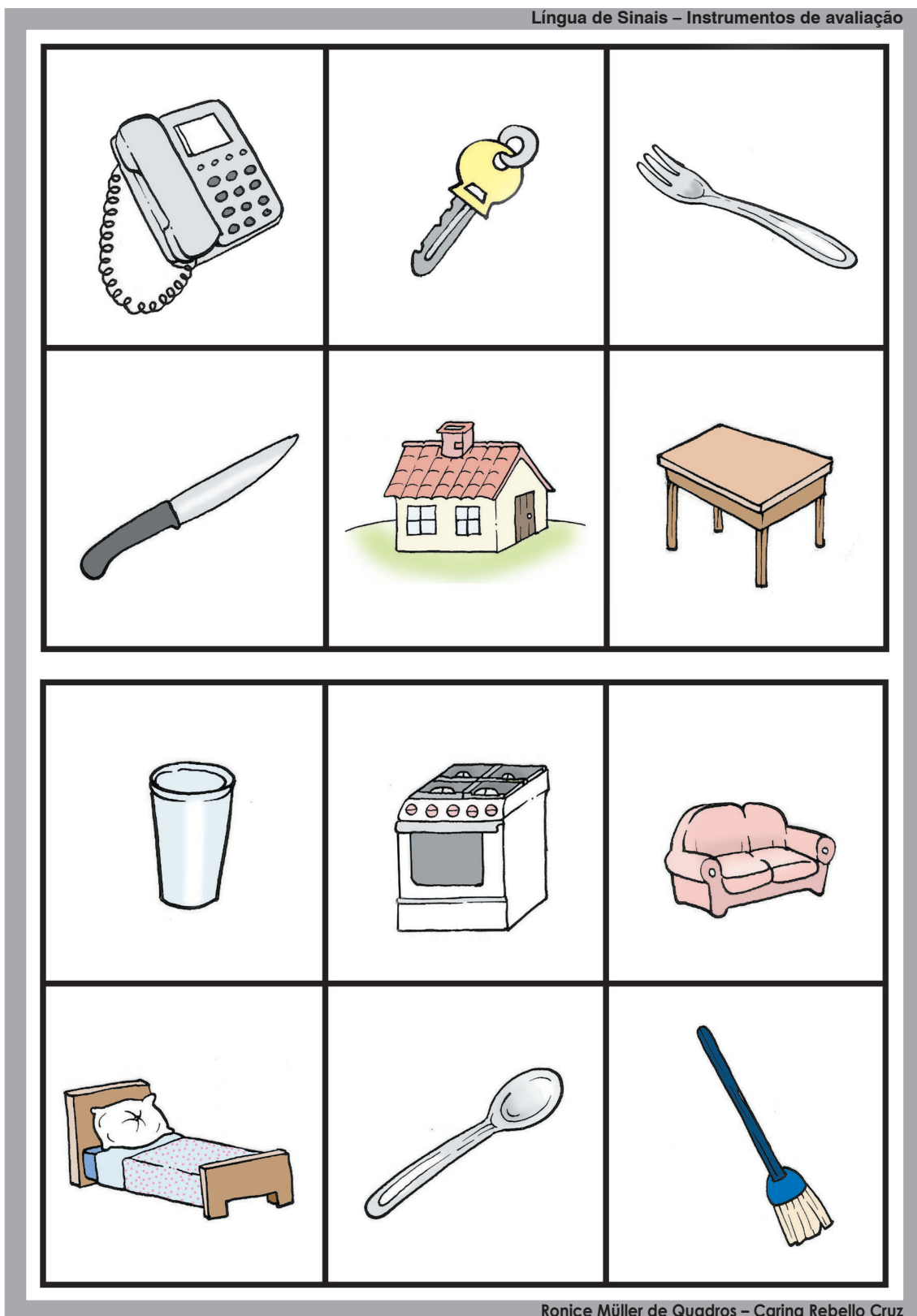


Ronice Müller de Quadros – Carina Rebello Cruz

# Bingo de cartelas

## Cartelas

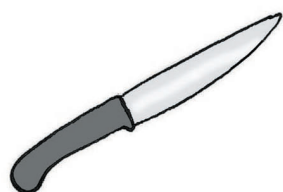
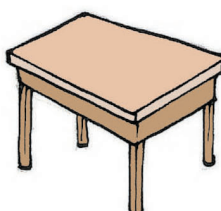
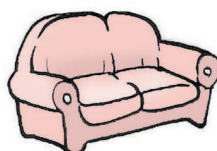
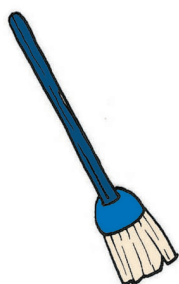
Língua de Sinais – Instrumentos de avaliação



Ronice Müller de Quadros – Carina Rebello Cruz

Fichas para sorteio (deverão ser recortadas)

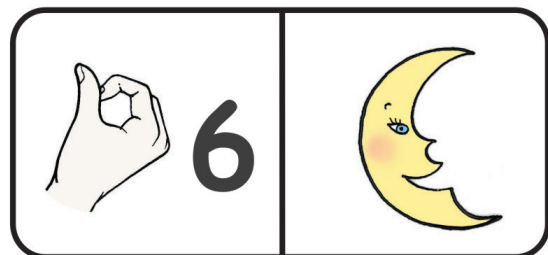
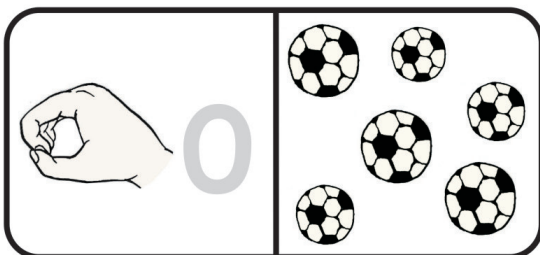
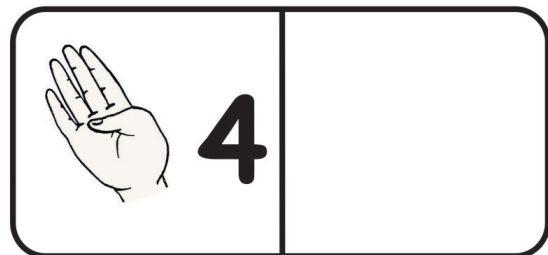
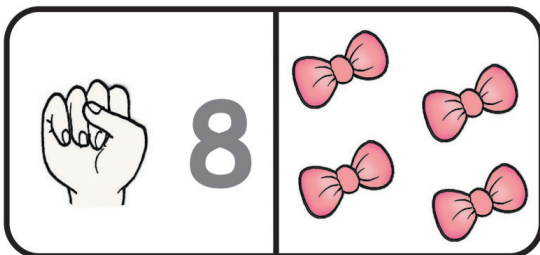
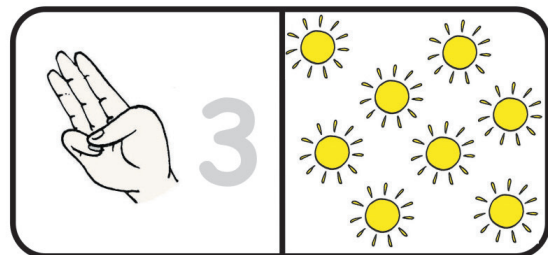
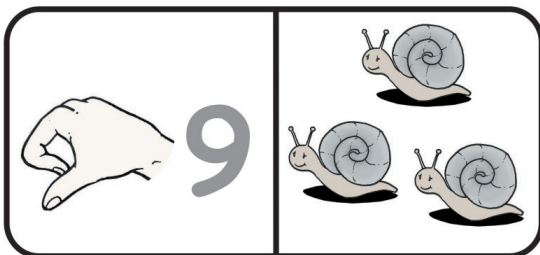
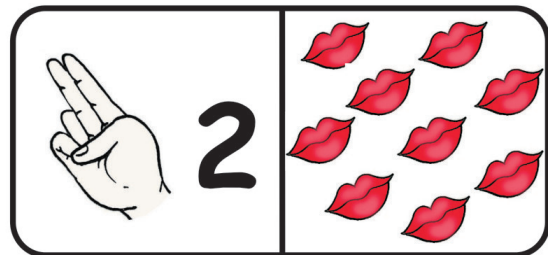
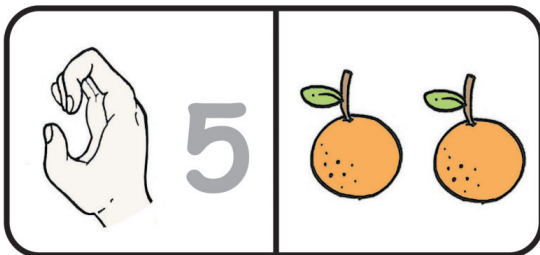
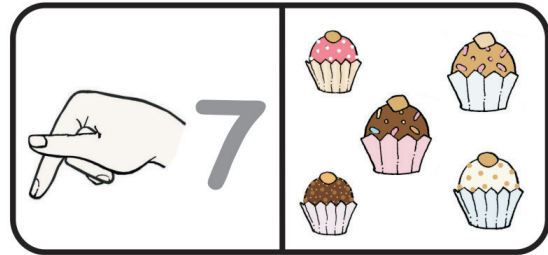
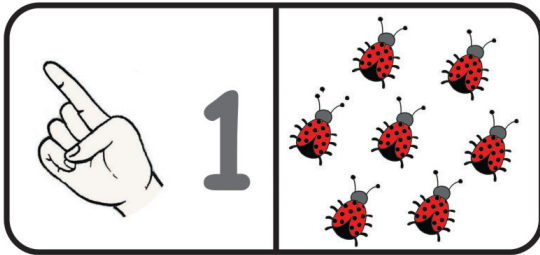




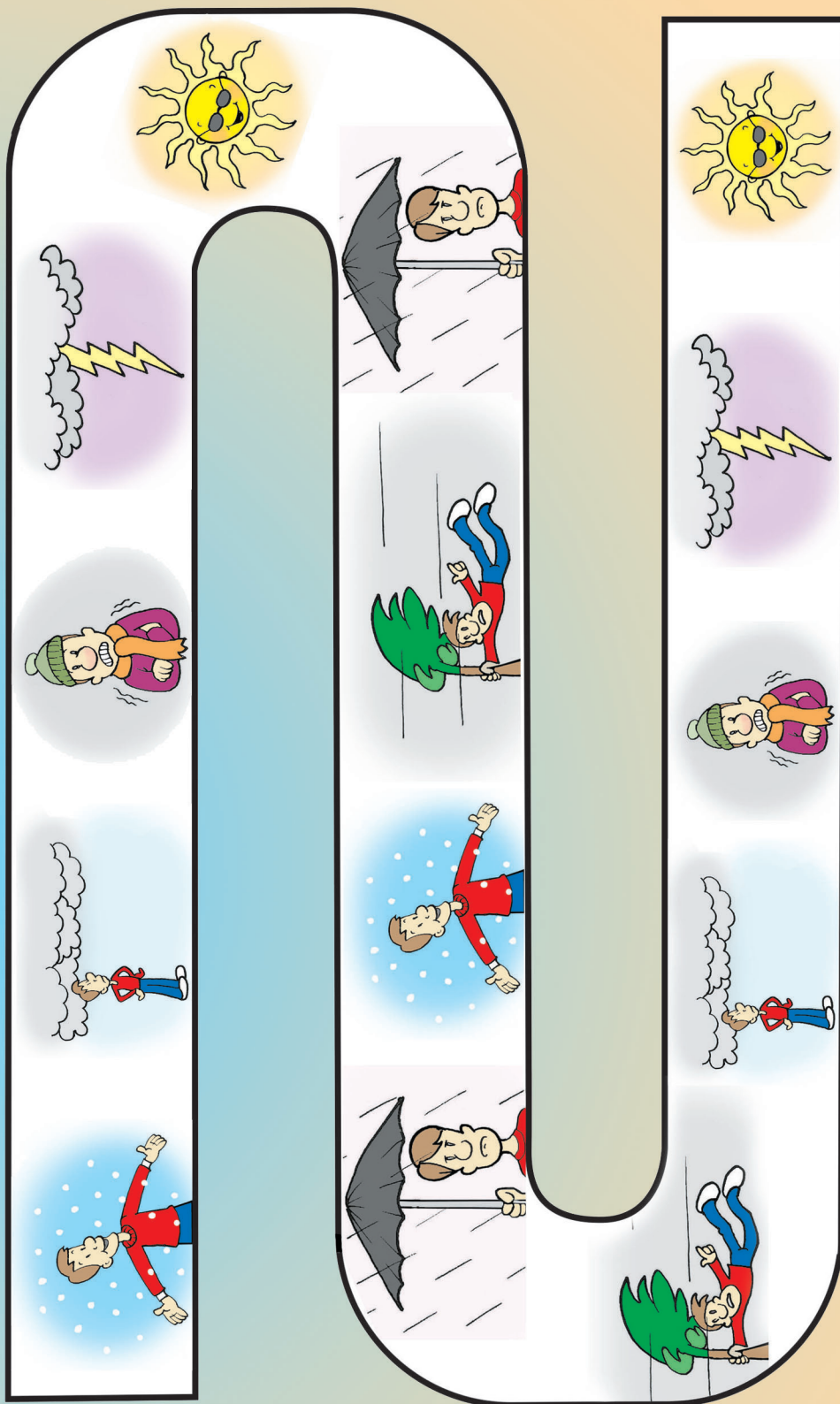
Fichas para sorteio (deverão ser recortadas)

# Dominó

Língua de Sinais – Instrumentos de avaliação

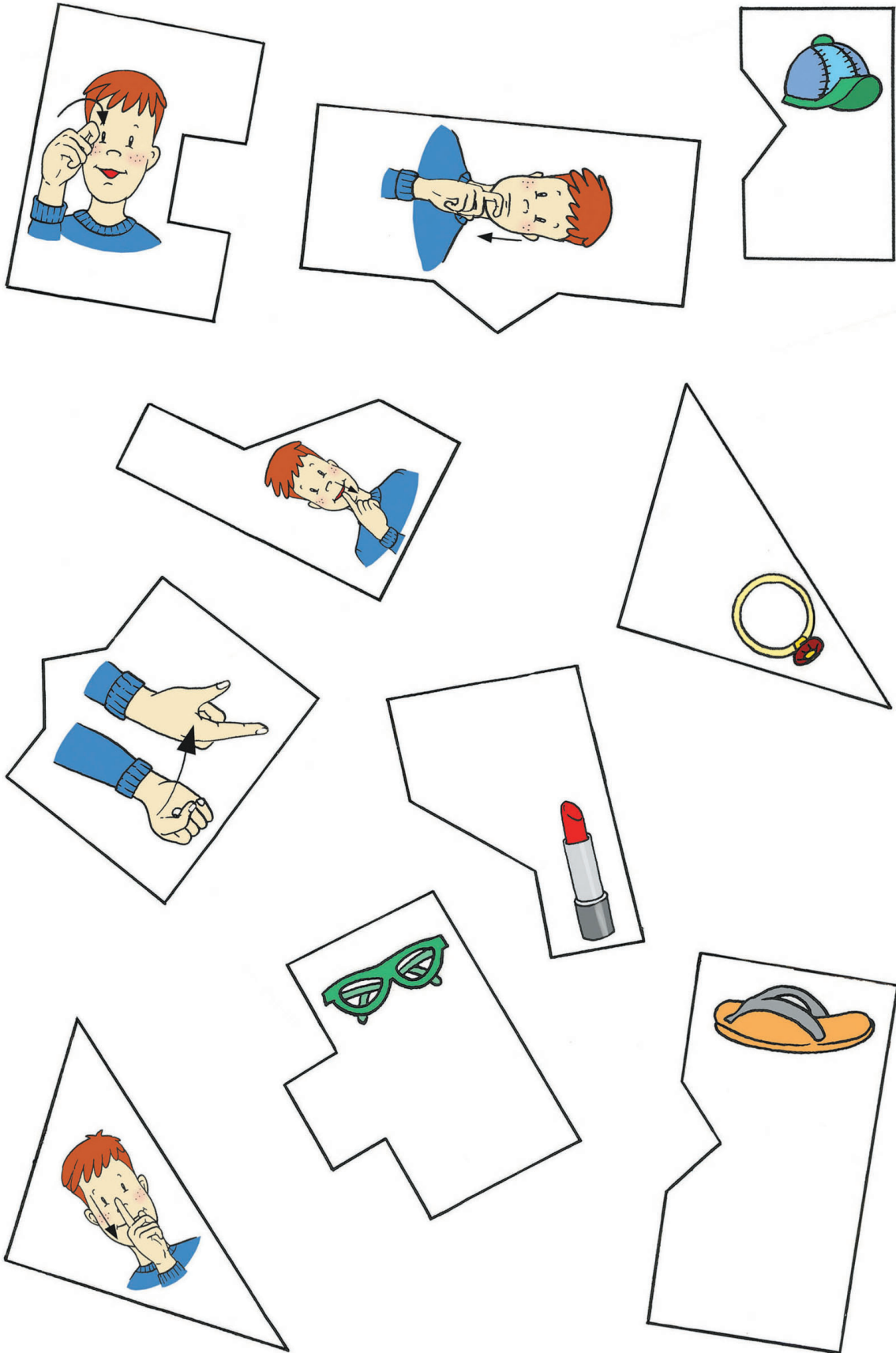


# Corrida



# Quebra-cabeça

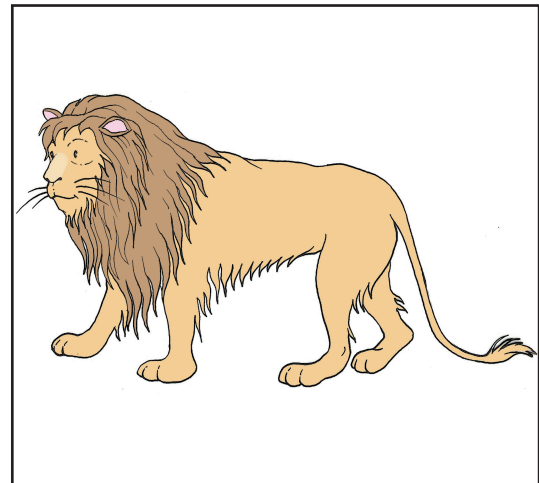
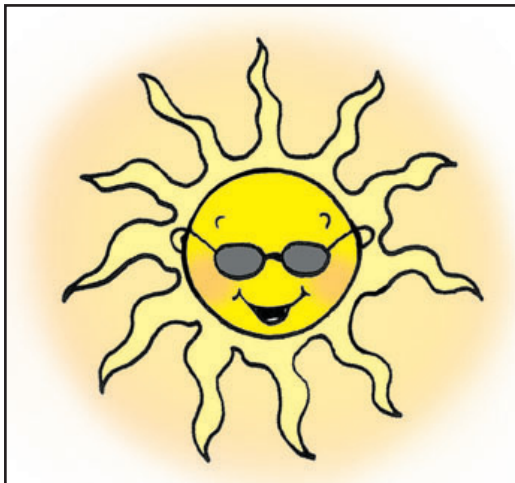
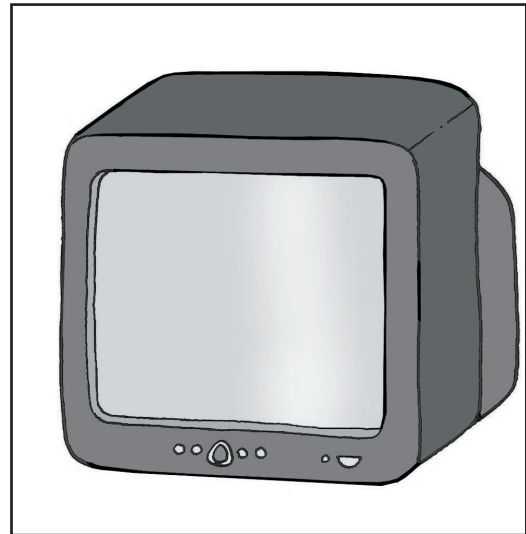
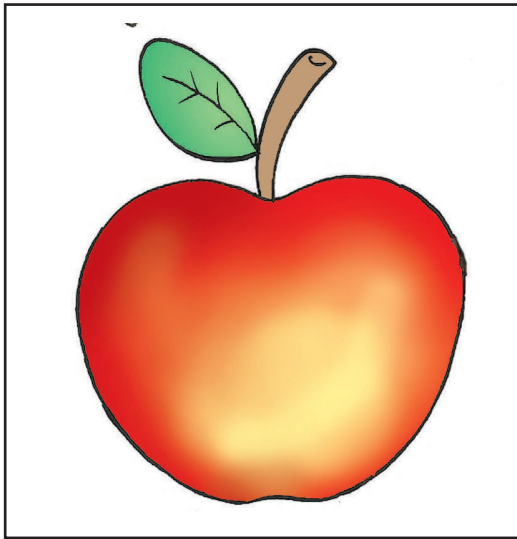
Língua de Sinais – Instrumentos de avaliação





# Descubra a figura

Língua de Sinais – Instrumentos de avaliação

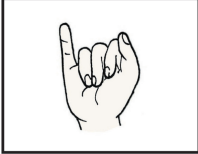
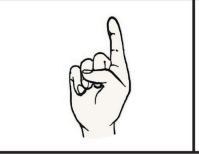
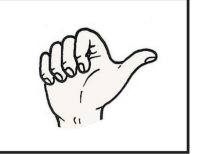





Ronice Müller de Quadros – Carina Rebello Cruz

# Onde e como faço sinais

## Modelo 1

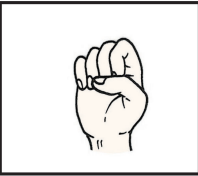
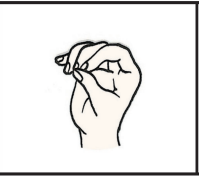
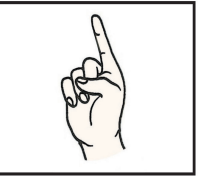
Língua de Sinais – Instrumentos de avaliação


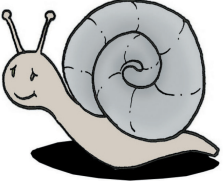
		
---	---	--



Ronice Müller de Quadros – Carina Rebello Cruz

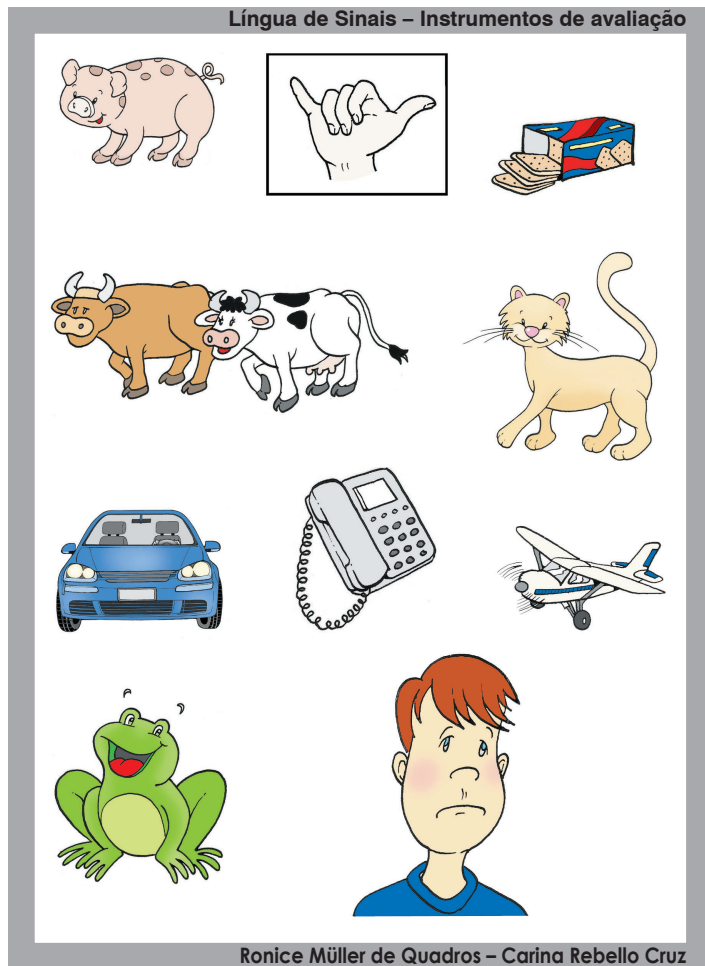
Língua de Sinais – Instrumentos de avaliação

		
---	---	--



Ronice Müller de Quadros – Carina Rebello Cruz

Modelo 2



# Encontre a figura

Língua de Sinais – Instrumentos de avaliação

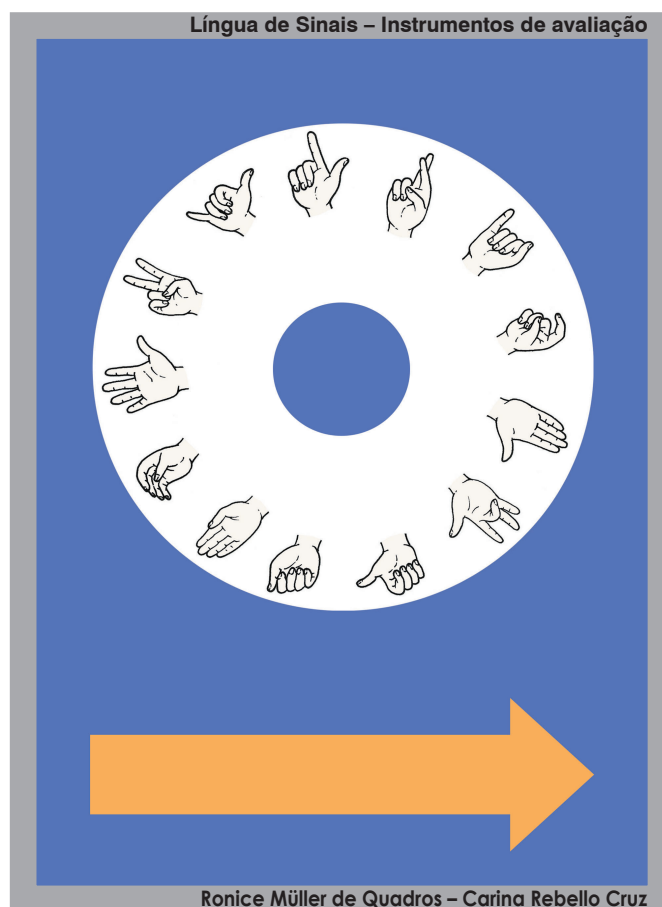


Ronice Müller de Quadros – Carina Rebelo Cruz

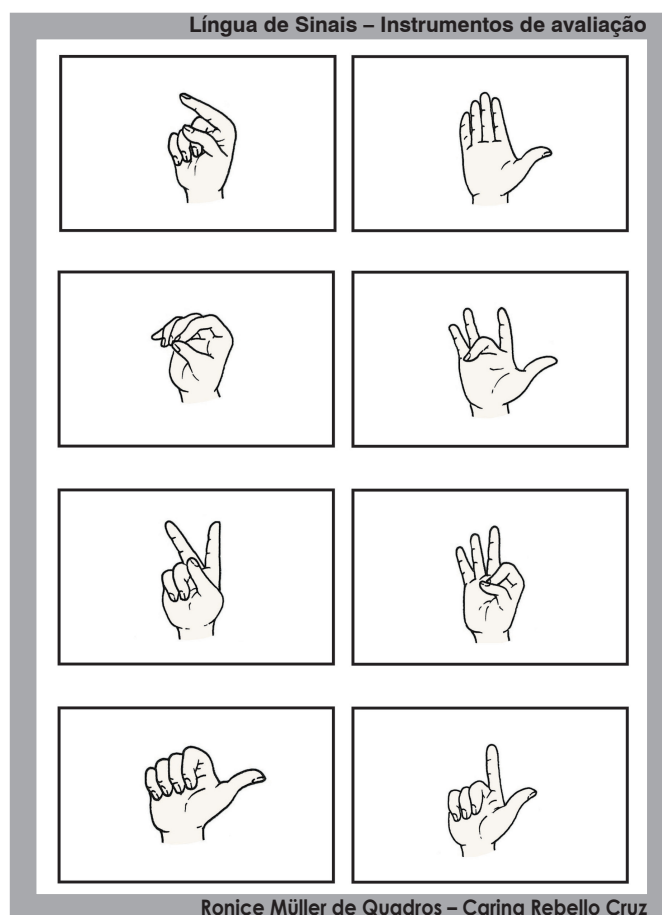


# Configuração das mãos

Modelo 1



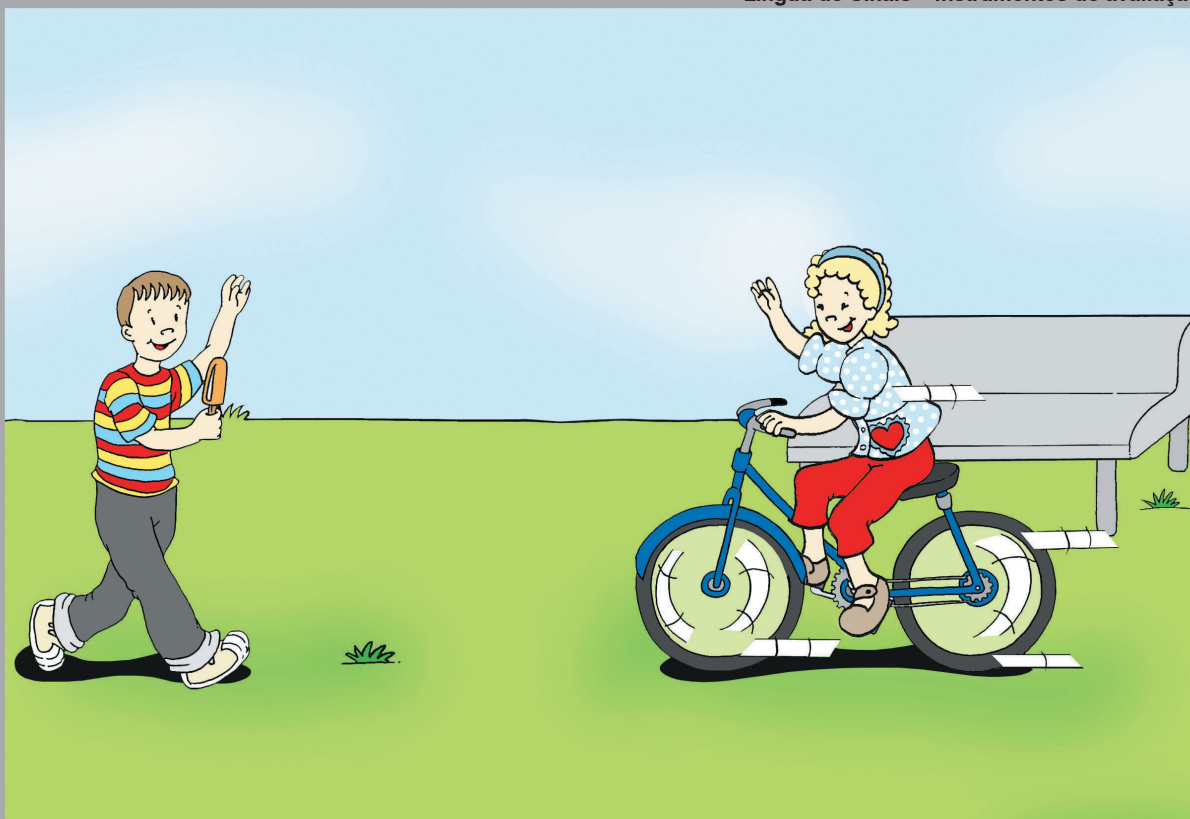
Modelo 2



# A troca

(História sinalizada no DVD)

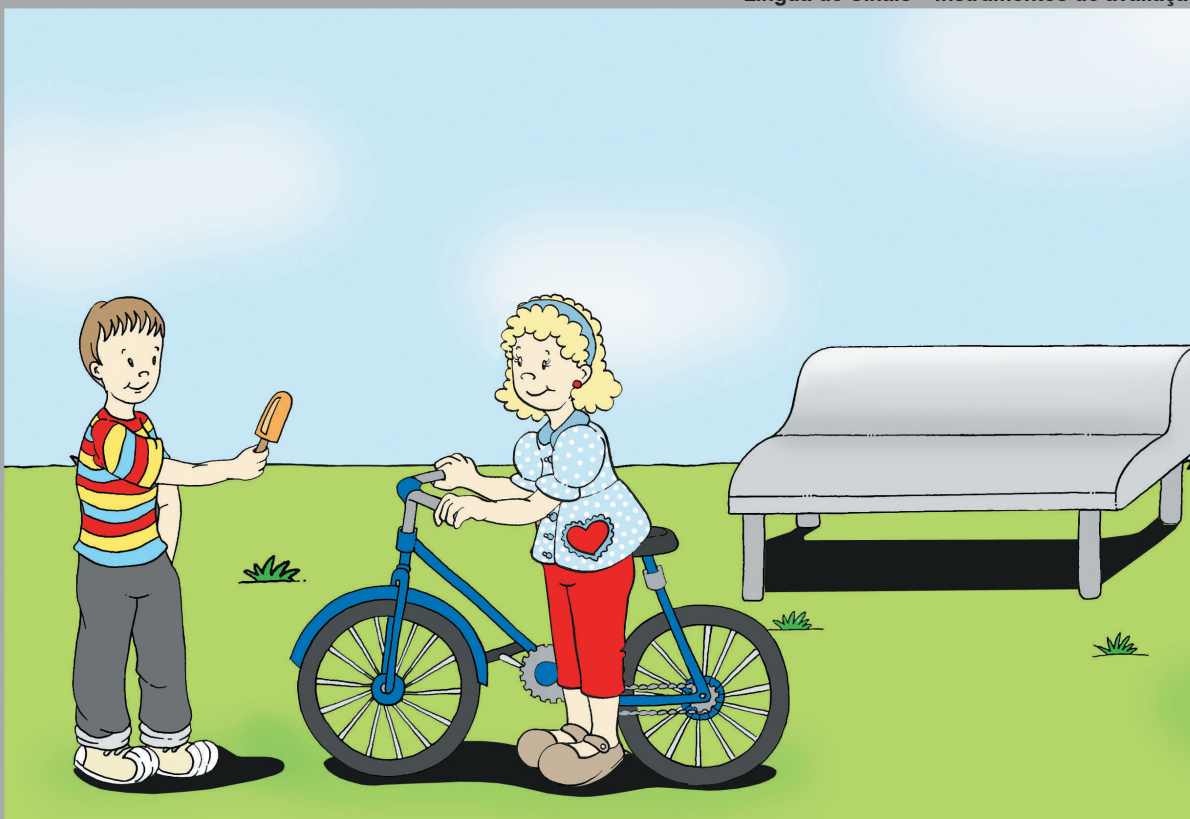
Língua de Sinais – Instrumentos de avaliação



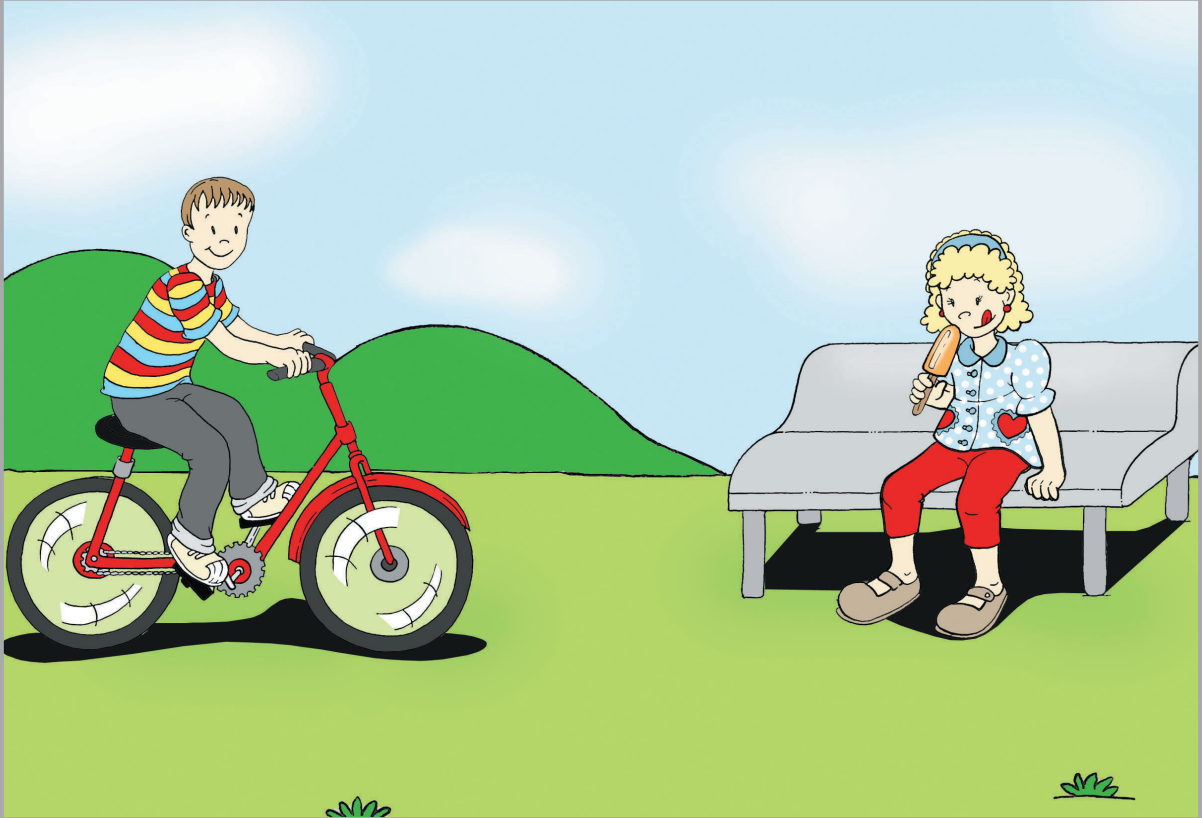
Ronice Müller de Quadros – Carina Rebello Cruz



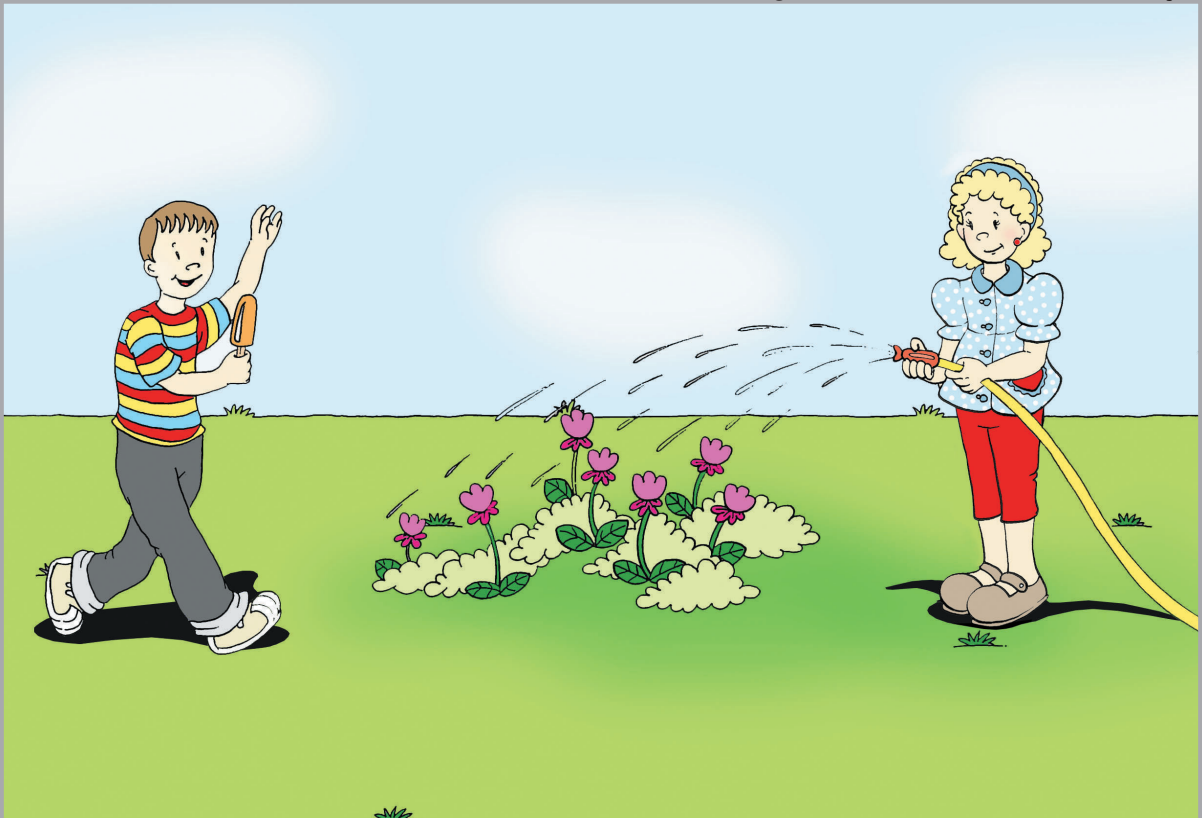
Língua de Sinais – Instrumentos de avaliação



Ronice Müller de Quadros – Carina Rebello Cruz



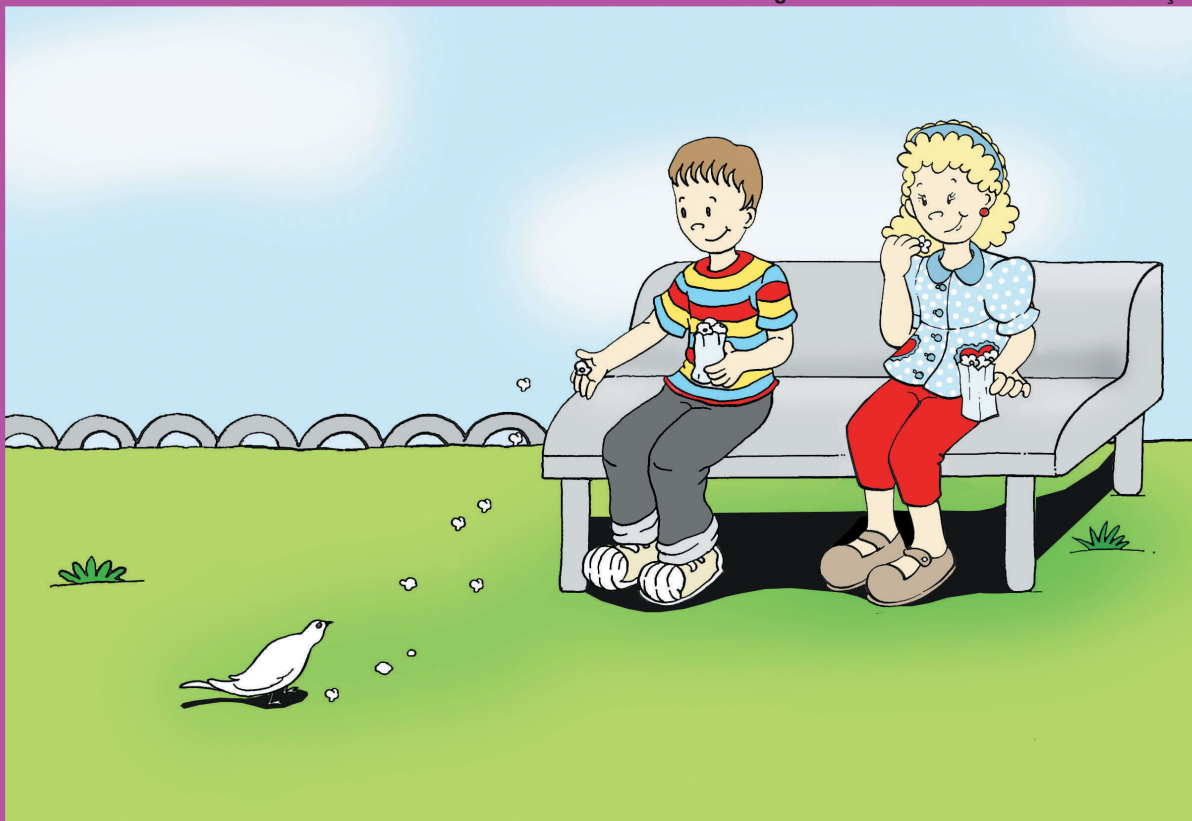
Ronice Müller de Quadros – Carina Rebello Cruz



Ronice Müller de Quadros – Carina Rebello Cruz

# Os amigos

Língua de Sinais – Instrumentos de avaliação



Ronice Müller de Quadros – Carina Rebello Cruz

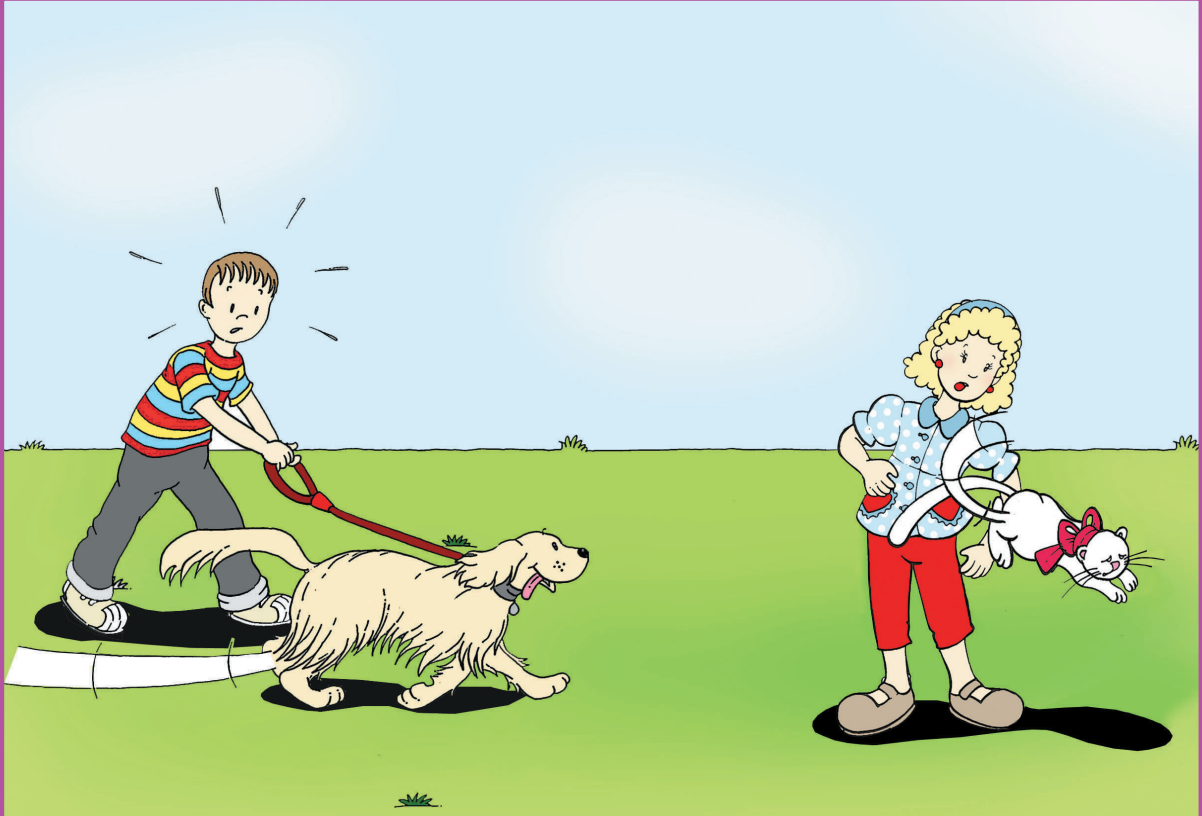


Língua de Sinais – Instrumentos de avaliação

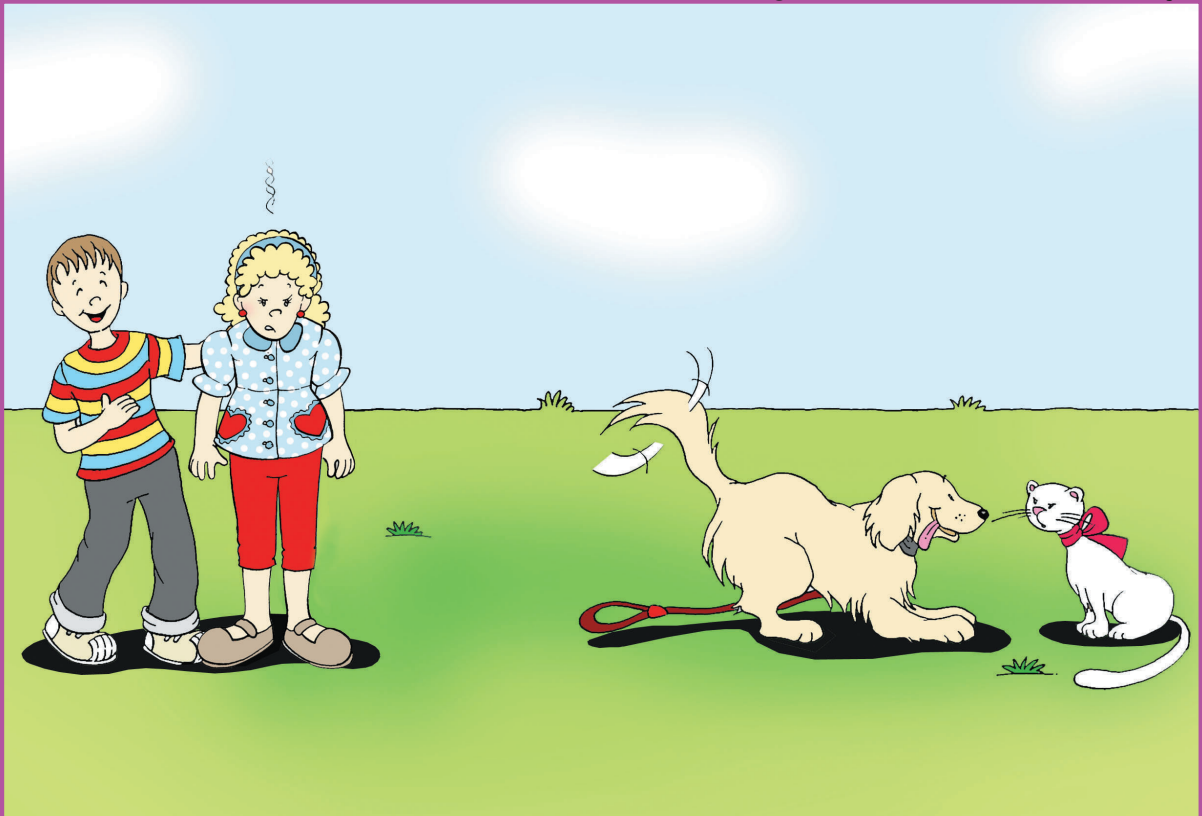


Ronice Müller de Quadros – Carina Rebello Cruz





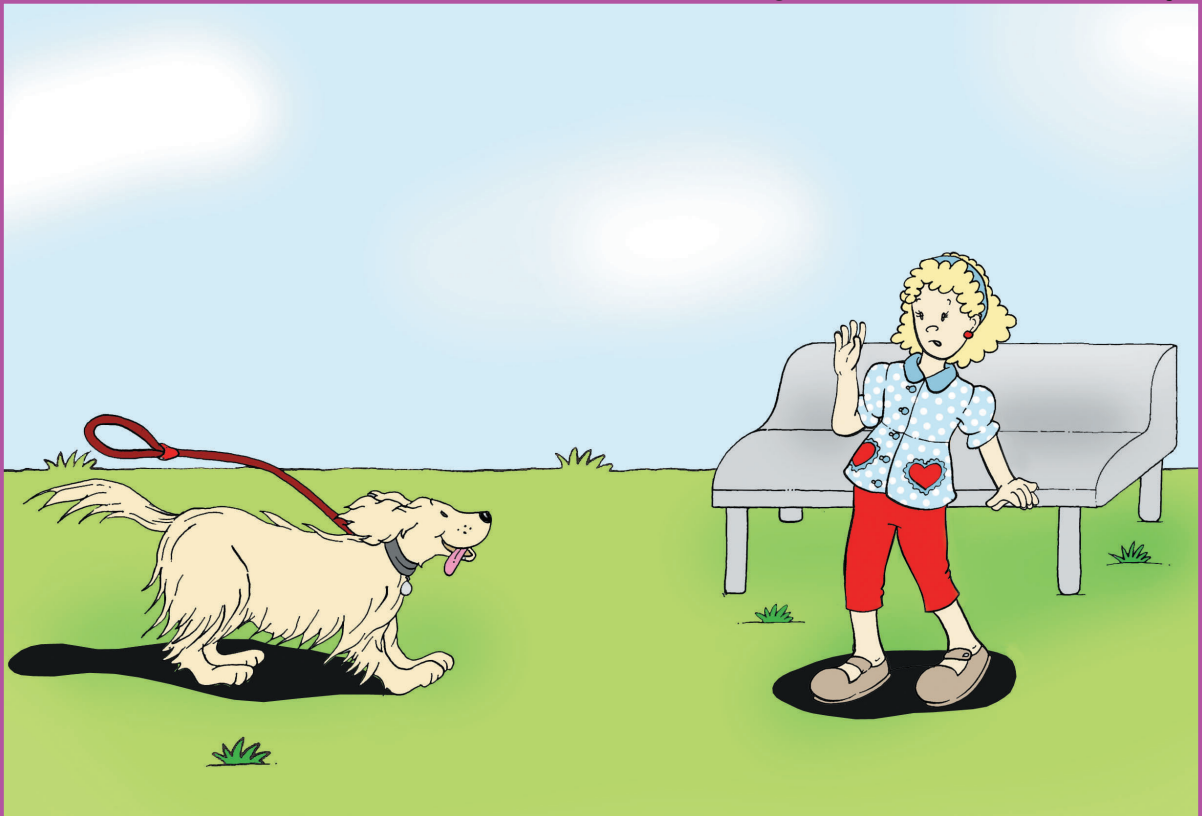
Ronice Müller de Quadros – Carina Rebello Cruz



Ronice Müller de Quadros – Carina Rebello Cruz



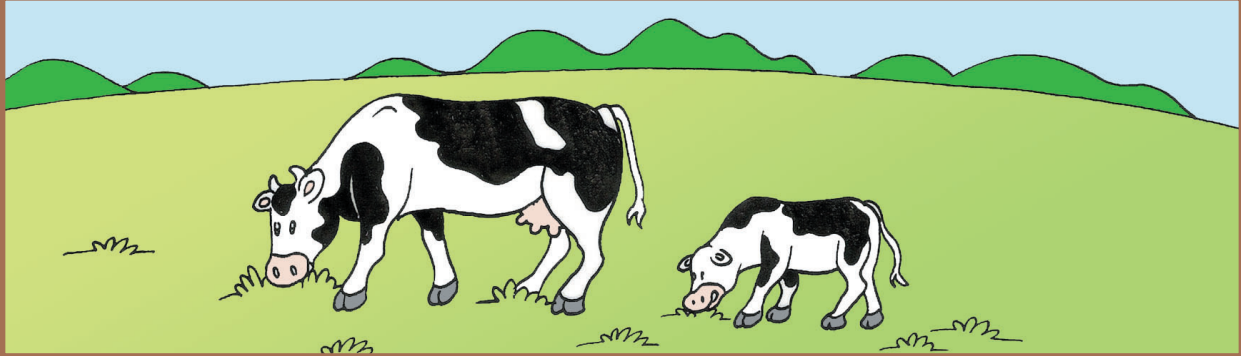
Ronice Müller de Quadros – Carina Rebello Cruz



Ronice Müller de Quadros – Carina Rebello Cruz

# O filhote

Língua de Sinais – Instrumentos de avaliação



Ronice Müller de Quadros – Carina Rebello Cruz



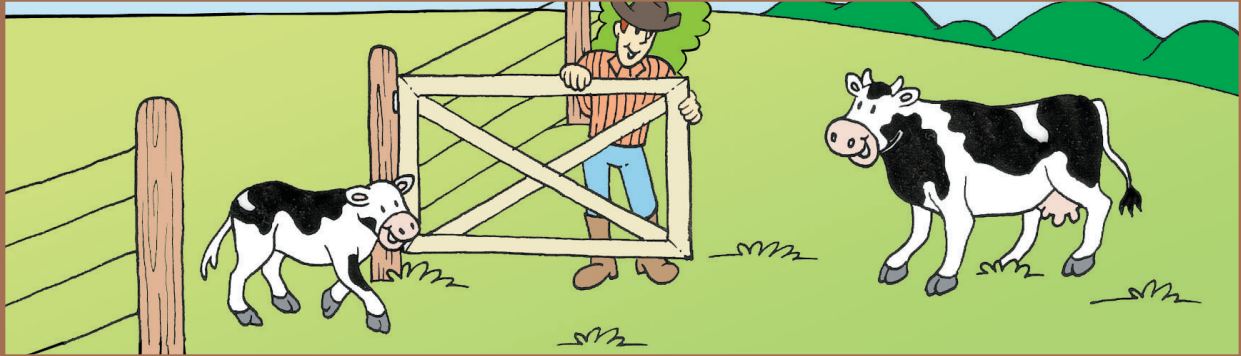
Língua de Sinais – Instrumentos de avaliação



Ronice Müller de Quadros – Carina Rebello Cruz



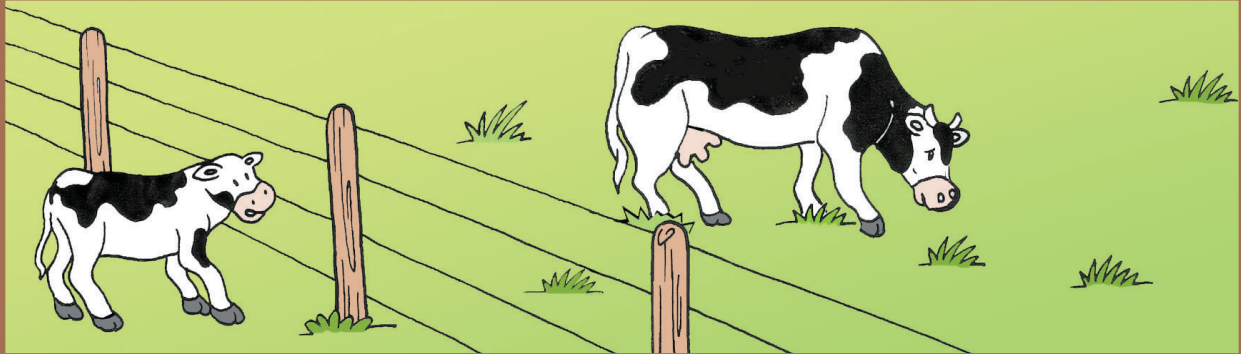
Língua de Sinais – Instrumentos de avaliação



Ronice Müller de Quadros – Carina Rebello Cruz



Língua de Sinais – Instrumentos de avaliação



Ronice Müller de Quadros – Carina Rebello Cruz





Ronice Müller de Quadros – Carina Rebello Cruz



Ronice Müller de Quadros – Carina Rebello Cruz

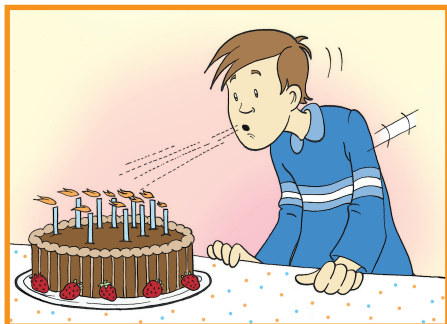


# Fichas para aplicação das tarefas de demonstração

## FASE I

### Tarefa 1

a



b



c



### Tarefa 2

a



b



c

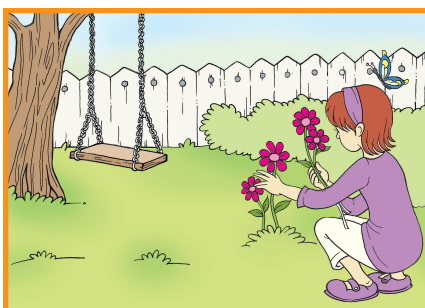


### Tarefa 3

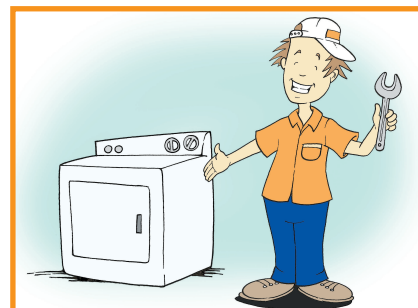
a



b



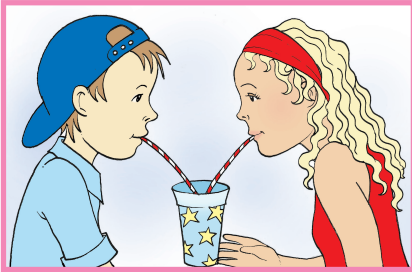
c



## FASE II

### Tarefa 1

a



b

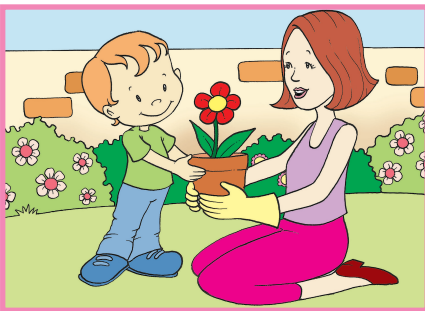


c



### Tarefa 2

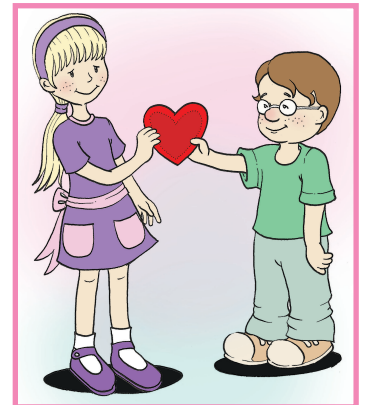
a



b



c



### Tarefa 3

a



b



c



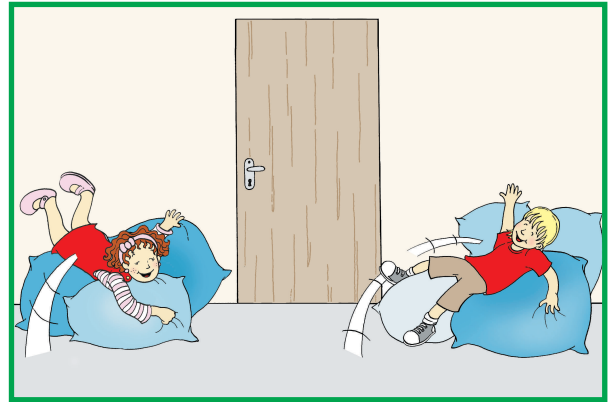
# FASE III

## Tarefa 1

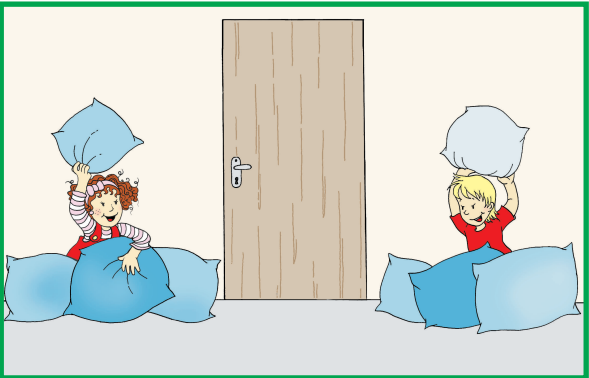
a



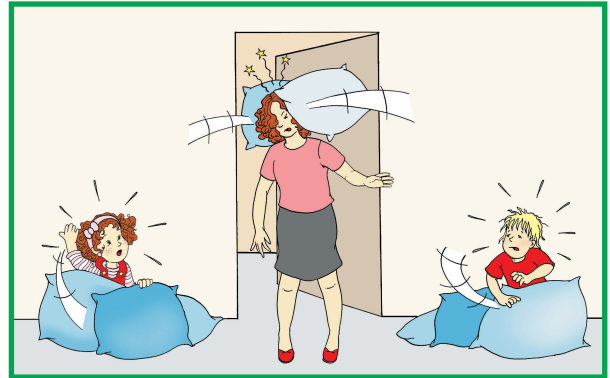
b



c



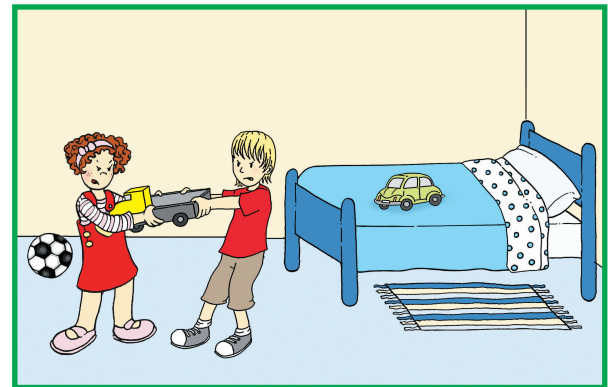
d



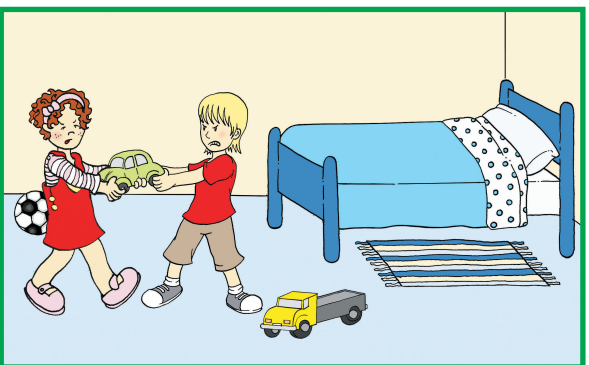
e



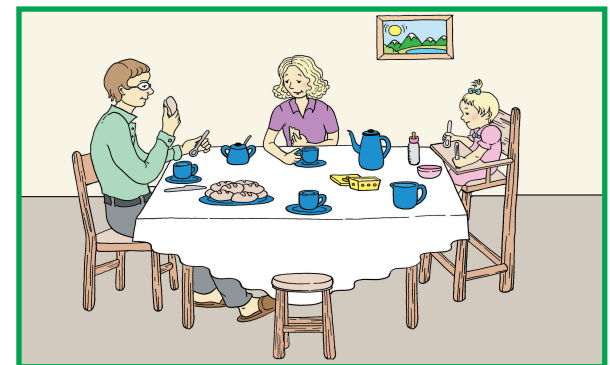
f



g



h

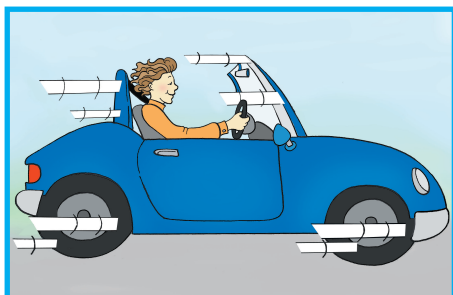


# Fichas para aplicação das tarefas de avaliação

## FASE I

### Tarefa 1

a



b



c

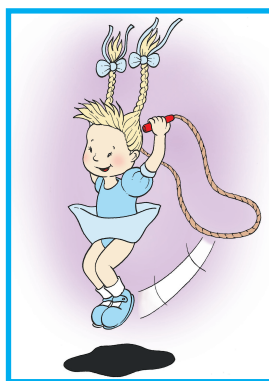


### Tarefa 2

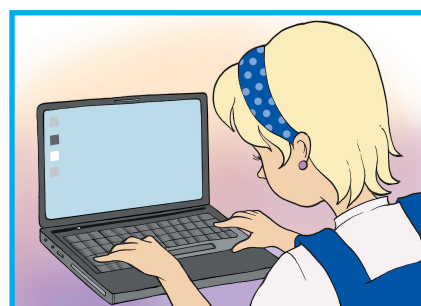
a



b



c

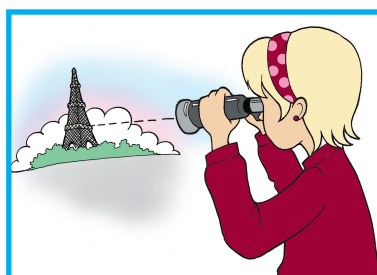


### Tarefa 3

a



b



c



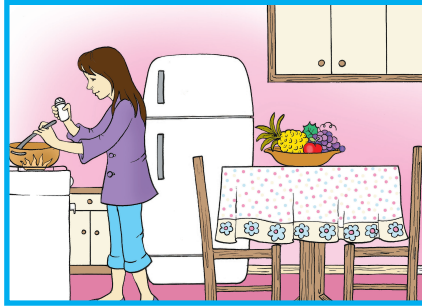


## Tarefa 4

a



b

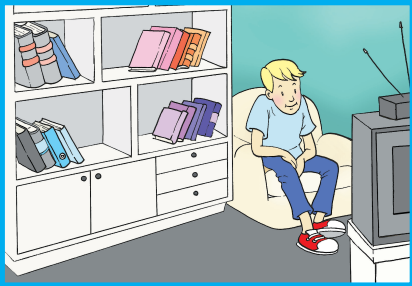


c



## Tarefa 5

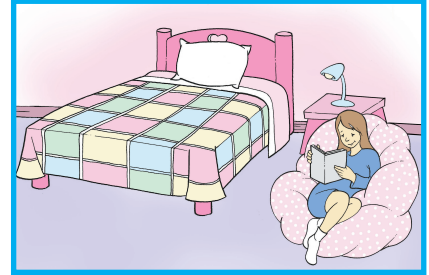
a



b



c



## FASE II

### Tarefa 1

a



b

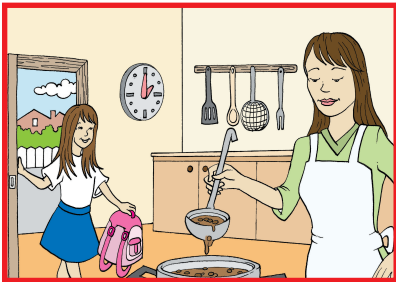


c

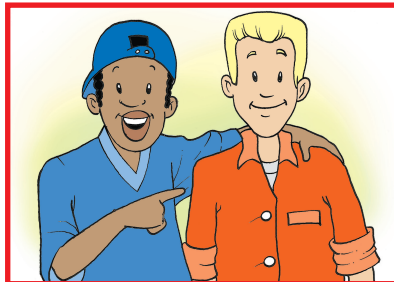


## Tarefa 2

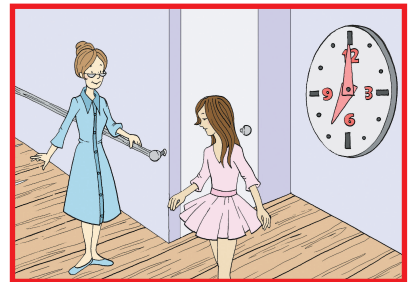
a



b



c



## Tarefa 3

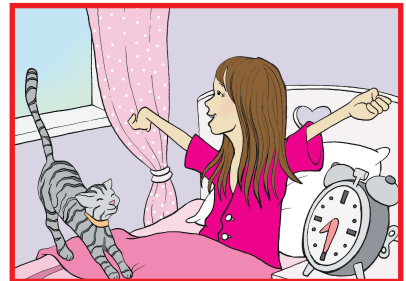
a



b



c



## Tarefa 4

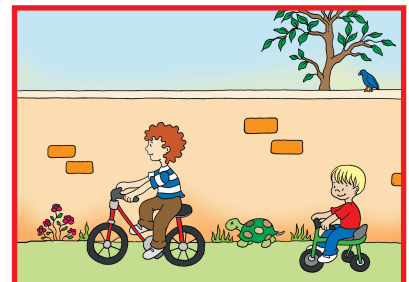
a



b

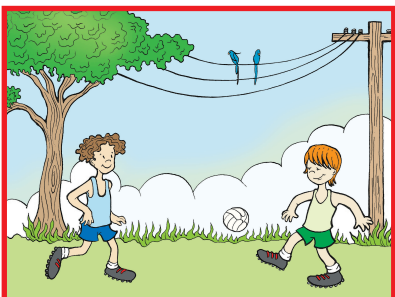


c



## Tarefa 5

a



b



c



### FASE III

### Tarefa 1

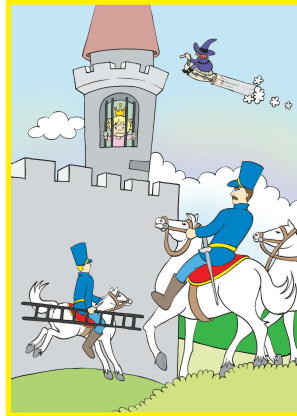
a



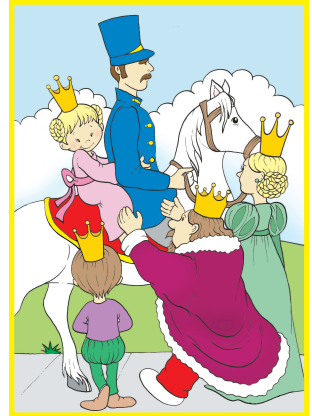
b



c



d



e



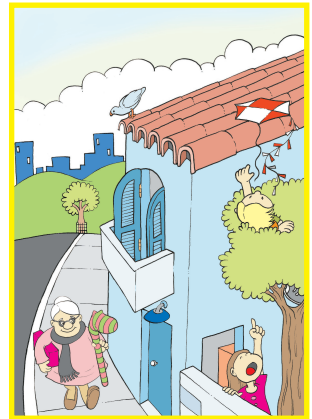
f



g



h



# Instrumento de Avaliação da Língua de Sinais (IALS)

## Ficha de respostas da avaliação da linguagem compreensiva

Nome: \_\_\_\_\_ Data de nascimento: \_\_/\_\_/\_\_

Idade: \_\_\_\_\_ Série: \_\_\_\_\_

Examinador(a): \_\_\_\_\_ Data: \_\_/\_\_/\_\_

Tarefas de demonstração		
<p><b>Fase I</b></p> <p>Tarefa 1 (a) (b) (c) Tarefa 2 (a) (b) (c) Tarefa 3 (a) (b) (c)</p> <p>Acertos: _____ % ( ) Excelente ( ) Bom ( ) Insuficiente</p>	<p><b>Fase II</b></p> <p>Tarefa 1 (a) (b) (c) Tarefa 2 (a) (b) (c) Tarefa 3 (a) (b) (c)</p> <p>Acertos: _____ % ( ) Excelente ( ) Bom ( ) Insuficiente</p>	<p><b>Fase III</b></p> <p>Tarefa 1</p> <p><b>A - Seleção:</b> ( ) Excelente ( ) Bom ( ) Insuficiente</p> <p><b>B - Ordem:</b> ( ) Excelente ( ) Bom ( ) Insuficiente</p>
Tarefas de avaliação		
<p><b>Fase I</b></p> <p>Tarefa 1 (a) (b) (c) Tarefa 2 (a) (b) (c) Tarefa 3 (a) (b) (c) Tarefa 4 (a) (b) (c) Tarefa 5 (a) (b) (c)</p> <p>Acertos: _____ % ( ) Excelente ( ) Bom ( ) Insuficiente</p>	<p><b>Fase II</b></p> <p>Tarefa 1 (a) (b) (c) Tarefa 2 (a) (b) (c) Tarefa 3 (a) (b) (c) Tarefa 4 (a) (b) (c) Tarefa 5 (a) (b) (c)</p> <p>Acertos: _____ % ( ) Excelente ( ) Bom ( ) Insuficiente</p>	<p><b>Fase III</b></p> <p>Tarefa 1</p> <p><b>A - Seleção:</b> ( ) Excelente ( ) Bom ( ) Insuficiente</p> <p><b>B - Ordem:</b> ( ) Excelente ( ) Bom ( ) Insuficiente</p>

**Observações:** \_\_\_\_\_

\_\_\_\_\_

\_\_\_\_\_

\_\_\_\_\_

**Interpretação dos resultados:** \_\_\_\_\_

\_\_\_\_\_

\_\_\_\_\_

\_\_\_\_\_



# Instrumento de Avaliação da Língua de Sinais (IALS)

## Ficha de respostas da avaliação da linguagem expressiva

Nome: \_\_\_\_\_ Data de nascimento: \_\_/\_\_/\_\_

Idade: \_\_\_\_\_ Série: \_\_\_\_\_

Examinador(a): \_\_\_\_\_ Data: \_\_/\_\_/\_\_

Transcrição da narração: \_\_\_\_\_

---

---

---

---

---

---

---

---

Aspectos fonológicos (adequado/inadequado)	Vocabulário (aspectos semânticos e morfológicos)	CLs (sim/não/inconstante)	Referências no espaço (sim/não)	Sequência lógica (sim/não/inconsistente)	Quantidade de fatos

Observações: \_\_\_\_\_

---

---

---

---

---

---

Interpretação dos resultados: \_\_\_\_\_

---

---

---

---

---

---